

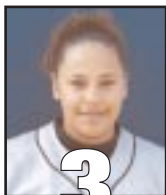
2002 UNIVERSITY LEADERSHIP CONFERENCE



LEADERSHIP CONFERENCE



Broadcast Roster



3

Brooke Lyons

JR • OF • R/R
Topeka, Kan.



4

Molly Gleisberg

SO • OF • B/R
Olathe, Kan.



5

Holly Reichel

SO • P • L/R
Mexico, Mo.



7

Jackie Sells

FR • UT • R/R
Lee's Summit, Mo.



8

Jennifer Fletcher

SO • IF • R/R
DeSoto, Kan.



9

Katie Gregg

FR • P • R/R
Overland Park, Kan.



11

Dara Clouse

SO • UT • L/L
Silver Lake, Kan.



12

Ashley Perkins

FR • P • R/R
Shawnee, Kan.



13

Julie Blaufuss

JR • C • R/R
Lenexa, Kan.



14

Crystal Wittlinger

FR • 2B • R/R
Olathe, Kan.



16

Dawn Nachbar

SR • 2B/SS • R/R
Shawnee, Kan.



17

Kristen Cheney

SR • OF • L/L
Wichita, Kan.



18

Katie Schmidt

SO • IF • R/R
Topeka, Kan.



19

Jackie Horn

FR • C • R/R
Basehor, Kan.



20

Keri Tanner

FR • 3B • R/R
Overland Park, Kan.



HC

Kim Newbern

Head Coach
6th season (166-100)



AG

Liz Bainter

Assistant Coach
5th season

Pronunciation Guide

Gleisberg - GLEECE • berg
Reichel - RITCH • el
Blaufuss - BLAW • fuss
Cheney - CHAIN • ee

2002 Lady Blues



2002 Washburn Lady Blues (front row): Trainer Jamie Kramer **(second row):** Jackie Sells and Dawn Nachbar. **(third row):** Kristen Cheney, Crystal Wittlinger, Jackie Horn, Ashley Perkins and Julie Blaufuss. **(fourth row):** Holly Reichel, Molly Gleisberg, Keri Tanner, Jennifer Fletcher and Brooke Lyons. **(fifth row):** Head Coach Kim Newbern, Katie Gregg, Dara Clouse, Katie Schmidt and Assistant Coach Liz Bainter.



2002 SENIORS: KRISTEN CHENEY AND DAWN NACHBAR

2002 LADY BLUES SOFTBALL SCHEDULE

DATE	OPPONENT	PLACE	TIME	DATE	OPPONENT	PLACE	TIME
<i>University of Central Arkansas Tournament - Feb. 22-23</i>							
<i>NFCA/Schutt Lead-off Classic - March 1-3</i>							
March 5	at Kansas	Lawrence, Kan.	4 p.m.	APRIL 2	*PITTSBURG STATE	TOPEKA	3 P.M.
MARCH 6	BETHANY	TOPEKA	3 P.M.	April 5	*at Southwest Baptist	Bolivar, Mo.	2 p.m.
<i>Missouri Southern Invitational - March 8-9</i>							
March 13	at Fort Hays State	Hays, Kan.	2 p.m.	April 6	*at Missouri-Rolla	Rolla, Mo.	1 p.m.
MARCH 14	SOUTH DAKOTA STATE	TOPEKA	2 P.M.	April 7	at Lincoln	Jefferson City, Mo.	noon
<i>Washburn Big Blue Classic - March 15-16</i>							
MARCH 15	COLORADO-COLO. SPRINGS	TOPEKA	9:30 A.M.	April 9	*at Missouri Southern	Joplin, Mo.	3 p.m.
MARCH 15	TARLETON STATE	TOPEKA	11:30 A.M.	APRIL 12	LINCOLN	TOPEKA	1 P.M.
MARCH 15	SOUTH DAKOTA STATE	TOPEKA	3 P.M.	APRIL 14	CENTRAL METHODIST	TOPEKA	TBA
MARCH 16	BRACKET PLAY	TOPEKA	10 A.M.	April 17	*at Missouri Western	St. Joseph, Mo.	5 p.m.
MARCH 16	CHAMPIONSHIP	TOPEKA	NOON	APRIL 19	*TRUMAN STATE	TOPEKA	2 P.M.
<i>Rebel Games - March 18-22</i>							
MARCH 27	*NORTHWEST MISSOURI	TOPEKA	2:30 P.M.	APRIL 20	*CENTRAL MISSOURI	TOPEKA	NOON
<i>University of Nebraska-Omaha Invitational - March 29-30</i>							
		Orlando, Fla.		April 23	*at Emporia State	Emporia, Kan.	3 p.m.
				APRIL 24	FORT HAYS STATE	TOPEKA	3 P.M.
				<i>MIAA Softball Championships - May 3-4</i>			
				May 3-4	TBD	Gladstone, Mo.	TBA
				<i>NCAA North Central Regional - May 11-12</i>			
				<i>NCAA National Championships - May 16-20</i>			

Home Games (Bold Face, played at Washburn softball complex - (300)

*Mid-America Intercollegiate Athletics Association Game

Table of Contents

General Information

2002 Lady Blues Media Roster	IFC
Media Information	2
Covering the Lady Blues	3
About Washburn University	4-5
Athletics Telephone Directory	6
Athletics at Washburn	7-9
Athletic Success at Washburn	10-11
Washburn Softball Complex	56
2002 Schedule	BC

Washburn Coaching Staff

Head Coach Kim Newbern	12-13
Assistant Coach Liz Bainter	14
Washburn Coaching Records	14

Lady Blues Information

2002 Washburn Roster	15
Season Preview	16-17
Lady Blues Profiles	18-28
2001 Statistics	30
2001 Game by Game Results	31
2001 Honors and Awards	32
2001 Individual and Team Highs	33-34

The MIAA

About the MIAA	35
2001 MIAA Standings	36
2001 MIAA All-Conference Teams	36
2001 MIAA Statistics	37-38

Washburn Softball History

Team History and Awards	39
Individual Honor Roll	40-41
Yearly Summary	42
Annual Leaders	42
Individual and Team Records	43-45
Lady Blues Season Highs	46
Lady Blues Career Highs	47
Year by Year Scores	48-51

2002 Opponents

MIAA Opponents Information	52-54
Series Records vs. all opponents	55



Washburn Quick Facts

Sports Information Director Gene Cassell	
Office Phone	785.231.1010 x1791
Fax	785.231.1091
Home	785.272.0783
Press Box	785.231.1010 x2511
Softball Office	785.231.1010 x1797
Location	Topeka, Kansas
Enrollment	6,500
Founded	1865
Nickname	Lady Blues
Colors	Yale Blue and White
Facility	WU Softball Complex
Surface	Natural Grass
Capacity	300
Athletic Affiliations	NCAA Division II

Mid-America Intercollegiate Athletics Assoc.	
President	Dr. Jerry Farley
Athletic Director	Loren Ferre'
Head Softball Coach	Kim Newbern
Alma Mater	Kansas '94
Record at WU	161-100 (.617), 6th season
Overall Record	same
Office Phone	x1797
Best Time to Call	11 a.m.-noon
Assistant Coach	Liz Bainter
2001 Record	28-21
2001 MIAA Record	8-10 / 6th
2001 Final National Ranking	N/A
Lettermen Returning/Lost	9/3
Starters Returning/Lost	8/1

The 2002 Washburn University Softball Media Guide is intended to provide information for writers, broadcasters, sports editors, sports information personnel and fans who follow the Lady Blues. Material in the guide was current as of the printing deadline Jan. 19. Additional information is available in the Washburn Sports Information Office and through weekly releases available to personnel from accredited media outlets covering the Lady Blues.

Washburn University is in Topeka, Kan., at the intersection of 21st Street and Washburn Avenue. The Washburn Softball Complex is south of Lee Arena. Parking for the facility is adjacent to Washburn Avenue.

The Washburn University Sports Information Office is located in room 200 in Petro Allied Health Center. Office hours are from 8 a.m. to 5 p.m., Monday through Friday. Phone: 785.231.1010 x1791; Fax: 785.231.1091. You may e-mail the SID office at cassell@washburn.edu.

Media Credentials are not required for cover-

ing Washburn Softball Lady Blues, but it is requested to call the Sports Information Office to reserve a place in the Press Box.

Radio Stations wishing to broadcast from the Washburn Softball Complex should make broadcast requests through the Sports Information Office. KMAJ 1440 is the official broadcast station of Washburn Lady Blues Softball broadcasting select games. There is one telephone line available for the official station of the opposing team.

Telephones for writers from which to file are available in the press box.

Media Services include a game scorecard and lineups, plus statistics and game notes.

Postgame Interviews with Coach Kim Newbern are available to media personnel after her brief meeting with the team immediately following the game.

Players will be made available at the field and will be brought to media members. Players will be unavailable to the media in between games of doubleheaders.



**Voice of the Lady Blues,
Ron Simon**

Lady Blues on radio

Select Washburn softball games are broadcast in north-east Kansas on KMAJ 1440 AM in Topeka. Veteran announcer Ron Simon will call all the action.

The Washburn Softball Coaches Show can be heard from 6 p.m. to 7 p.m. on Thursday's on KMAJ 1440 AM with Ron Simon at Spanky's Sports Bar on 31st and Gage.

Simon is in his 15th season as the "Voice of the Ichabods and Lady Blues." The 1987 Kansas graduate is in his fifth year as the Director of Marketing and Promotions for Washburn Athletics.

Credits

The 2001 Washburn University Softball Media Guide was written and designed by Gene Cassell, sports information director. The guide was printed by the Washburn Service Area. Post Production work was completed by Capital Graphics of Topeka. The guide was edited by Regina Cassell and Ron Simon.

Action photos, mug shots, team and cover photos taken by sports information director Gene Cassell.



The 2001 Softball Media Guide was named "Best in the Country" by CoSIDA. The cover was also judged best in the nation.

Covering the Lady Blues

Print

Topeka Capital-Journal (daily)
785.295.1188
785.295.1230 Fax
1.800.777.7171
616 Jefferson, Topeka, KS 66607
Sports Editor: Kurt Caywood
WU Beat Writer: Ken Corbitt

Kansas City Star (daily)
816.234.4355
816.234.4360 Fax
1729 Grand Ave., Kansas City, MO 64108
Small College Beat Writer: David Boyce

Salina Journal (daily)
785.827.6363
785.827.6060 Fax
P.O. Box 779, Salina, KS 67401
800.827.6363

Wichita Eagle-Beacon (daily)
800.825.6397
316.268.6536 Fax
825 East Douglas, Wichita, KS 67201
Small College Beat Writer: Adam Knapp

Great Bend Tribune (daily)
316.792.1211
316.792.8381 Fax
2021 Forest, Great Bend, KS 67530
Sports Editor: John Mesh

Hutchinson News (daily)
800.766.5772
316.662.4186 Fax
P.O. Box 190, Hutchinson KS, 67504
Sports Editor

Washburn Review (weekly)
785.233.3211
785.231.1035 Fax
1700 SW College, Topeka, KS 66621
Sports Editor

WIBW (580 AM / 97.3 FM)
785.297.9797
785.272.3536 Fax
P.O. Box 119, Topeka, KS 66601
Sports Department: Eric Peterson

Radio

KWIC (99.3 FM)
Home of the Ichabods and Lady Blues
785.232.0993
785.232.9993 Fax
800 SW Jackson, Topeka, KS 66611
Sports Director

KMAJ (1440 AM) / KTOP (1490 AM)
785.272.1196
785.272.6219 Fax
5301 SW 7th St., Topeka, KS 66606
Sports Director: Mike Manns

KMAJ (107.7 FM) / KDVW (100.3 FM)
785.272.1196
785.272.6219 Fax
5315 SW 7th St., Topeka, KS 66606
Sports Director: Mike Manns

KTPK (106.9 FM)
785.297.1069
785.273.0123 Fax
3003 SW Van Buren, Topeka, KS 66611
Sports Director

Television

KSNT (Channel 27 • NBC)
785.582.3230
785.582.5283 Fax
P.O. Box 2700, Topeka, KS 66601
Sports Director: Brent Stover

KTKA (Channel 49 • ABC)
785.273.4949
785.273.9075 Fax
P.O. Box 2229, Topeka, KS 66601
Sports Director: Jason Lamb

WIBW (Channel 13 • CBS)
785.272.7030
785.271.0418 Fax
P.O. Box 119, Topeka, KS 66601
Sports Director: Mark Ewing

Wire Services

Associated Press (Kansas City)
800.852.4844
816.421.3590 Fax
215 West Pershing, Kansas City, MO 64108

Sportsticker
800.367.8935
800.336.0383 Fax



About Washburn

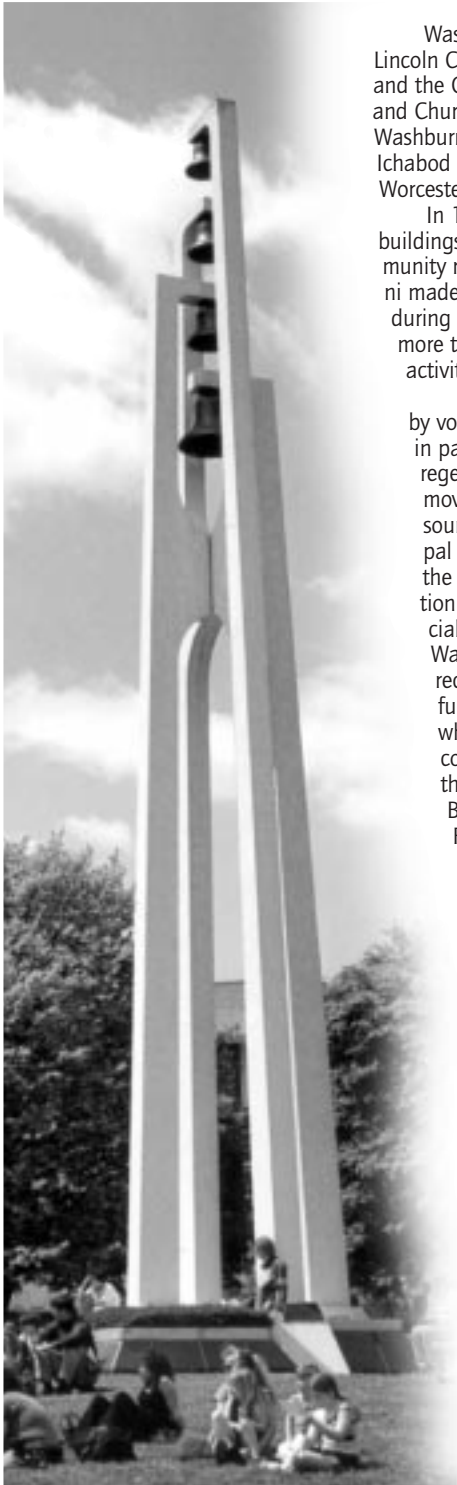
Washburn University was established in 1865 as Lincoln College by a charter issued by the state of Kansas and the General Association of Congregational Ministers and Churches of Kansas. In 1868, the school was renamed Washburn College, in recognition of a \$25,000 donation by Ichabod Washburn, a church deacon and resident of Worcester, Mass.

In 1966, a tornado struck Topeka and several historic buildings on campus were demolished. The Washburn community rallied and financial support from friends and alumni made possible the rebuilding of many school facilities during the coming years. Today, university facilities offer more than one million square feet of modern academic, activity and support space.

In 1941, the citizens of Topeka endorsed Washburn by voting to establish a municipal university, supported in part by the city and governed by a local board of regents. In 1999, the university primary funding was moved from the city property tax to county sales tax sources, with the school retaining status as a municipal subdivision of the state. In addition to local financial support.

Washburn has received state funds since 1961, which have been coordinated by the Kansas Board of Regents since 1991.

Washburn is governed by a nine-member Board of Regents. Washburn provides



About Washburn

broadly-based liberal arts and professional education through more than 190 certificate, associate, baccalaureate, master's and juris doctor programs through the College of Arts and Sciences and the Schools of Law, Business, Nursing and Applied Studies. Ninety percent of the faculty hold a doctorate of the highest degree available in their discipline. Individual attention is a priority at Washburn, with a student to faculty ratio of 18 to 1.



Dr. Jerry Farley

University President



Dr. Jerry B. Farley is in his third year as the president of Washburn University after a long association with the University of Oklahoma in Norman.

Farley previously held the position of vice president for community relations and economic development at OU and vice-president for administrative affairs at the Norman and Health Sciences Center campuses.

Before that, he held the position of vice president for business and finance at

Oklahoma State University and previously served as the associate vice president for administrative affairs and controller at the University of Oklahoma, Norman campus.

He earned his bachelor degree in accounting and finance and his masters and doctorate in higher education administration from OU.

He is a past president of the Southern Association of College and University Business Officers and is actively engaged in state and national associations of the College and University Business Officers.

Farley has been on the Board of Directors of the American Red Cross, the American Cancer Society, Oklahoma Teachers' Retirement System, the Norman Chamber of Commerce and the Norman Economic Development Coalition.

Washburn Academic Majors

College of Arts and Sciences

Anthropology, BA
Art, BA/BFA
Biology, BA/BS
Business Education, BEd
Chemistry, BA/BS
Computer Information Science, AA/BA/BS
Early Childhood Ed., AA/BA
Economics, BA
Education, BEd/MEd
English, BA
French, BA
General Science, BS
General Studies, BGS
German, BA
History, BA
Humanities, Creative and Performing Arts, AA

Mass Media Studies, BA
Mathematics, BA/BS
Medical Technology, BS
Music, BA/BM
Natural Science and Mathematics, AA
Philosophy, BA
Physical Education, BA/BEd
Physics, BA/BS
Political Science, BA
Psychology, BA/MA
Public Administration, BPA
Religious Studies, BA
Sociology, BA
Spanish, BA
Speech Communication, BA
Theatre, BA
School of Business
Business Administration,

BBA/MBA
Accounting, BBA
Economics, BBA
Finance, BBA
Management, BBA
Marketing, BBA
General Business, BBA

School of Nursing

Nursing, BSN
School Nurse Certification

School of Applied Science

Corrections, BSCJ
Law Enforcement, BSCJ
Human Services, C/AAS/BAS
Social Work, BSW/MSW
Technology Administration, BAS
Pre-professional
Dentistry, Engineering

Health Information Technology
Law
Medicine
Optometry
Pharmacy
Physical Therapy
Physical Therapist Assistant
Seminary, Radiologic Technology
Respiratory Therapy
Veterinary Medicine
School of Law
Law, JD

About Washburn

Washburn University

Main campus switchboard number: 785.231.1010

General athletics number: 785.231.1134

Athletics fax number: 785.231.1091

Washburn University Board of Regents

Harold "Hal" Dick, Hutchinson

Jim Roth, Wichita
Ben Blair, Topeka
Chuck Engel, Topeka
Janice B. DeBauge, Emporia

Tim Etzel, Topeka
Mayor Butch Felker, Topeka
Blanche Parks, Topeka
Karen Lee, Topeka

University Administration

President Dr. Jerry Farley x1556
Vice President / Academic Affairs Dr. Ron Wasserstein x1649
Vice President / Administration & Treasurer Wanda Hill x1634
Vice President / Student Life Denise Ottinger x1390

Washburn Athletics Phone Numbers

Director of Athletics Loren Ferre' x1794
Associate Director of Athletics for Development Jordan Canfield x1334
Assistant Director of Athletics Janet Degginger x1730
Assistant Director of Athletics for Exteranal Affairs Karmen Byers x1092
Sports Information Director Gene Cassell x1791
Assistant Sports Information Director Brad Noller x1791
Faculty Athletics Representative Larry Blumberg x1493
Director of Marketing / Promotions Ron Simon x1336
Academic Adviser Janet Degginger x1790
Head Athletic Trainer Steve Ice x1753
Head Equipment Manager Ron Wessel x1761, x1338
Athletic Facilities Manager Gil Herrera x1304
Athletics Secretary Sandy Foster x1339
Development Office Assistant Susan Foremsky x1466

Coaching Staff

Football

Head Coach Craig Schurig x1134
Offensive Coordinator Brian Miller x1705
Defensive Coordinator Chris Brown x1795
Defensive Line Coach/Strength and Conditioning David Trupp x1335
Offensive Backs Coach Keita Malloy x1798
Defensive Backs Coach Robbie Robinson x1947

Volleyball

Head Coach TBA x1756

Baseball

Head Coach Steve Anson x1793

Softball

Head Coach Kim Newbern x1797

Men's Basketball

Head Coach Bob Chipman x1355
Assistant Coach Kerry Dickerson x1333

Women's Basketball

Head Coach Ron McHenry x1796
Assistant Coach Lisa Curliss x1462

Golf

Head Coach Phil Frost x1764

Men's and Women's Tennis

Head Coach Jennifer Hastert x1757

2000-01 season in review

Team	Overall W-L	MIAA	MIAA Finish	Postseason
Baseball	22-24	17-13	3rd	none
Basketball-M	29-5	15-3	1st	National Finals
Basketball-W	13-14	7-11	6th	none
Football	5-6	3-6	7th	none
Golf	—	20 points	6th	none
Softball	28-21	8-10	6th	none
Tennis-M	10-13	2-2	4th	none
Tennis-W	21-3	4-1	3rd	NCAA Regionals
Volleyball	24-12	9-7	4th	none
Totals	152-98			

**Overall athletic department
winning percentage - .608**

Loren Ferre' **Athletics Director**



Loren Ferre' became Washburn's director of athletics in February of 1996 after a six-year appointment at Black Hills State University in Spearfish, S.D. Ferre' is a dynamic leader who has implemented many internal changes within the athletic department since arriving on campus. He has put increasing scholarships and departmental fund-raising at the top of his list.

At Washburn, Ferre' has been instrumental in the establishment of a strong Ichabod Club support team and the raising of funds for athletic scholarships. In addition, he created a position for a full-time marketing and promotions director who helps bring in new private dollars for scholarships and more excitement at all Washburn athletic contests.

While at BHSU, Ferre' was also director of the Donald E. Young Sports Fitness Center, a 172,000 square foot, \$10.2 million facility. During his Black Hills tenure, the athletics department nearly tripled its outside revenue, including large increases in ticket sales and scholarship funding. All 10 varsity teams won a conference title in his final three years.

Before joining the staff at Black Hills State, Ferre' spent 17 years at the University of North Texas. He was the director of the Coliseum (1987-90) was the associate and assistant director since 1980. He held the post of event coordinator (1978-80).

Ferre' is a 1971 graduate of Texas Christian University, earning a bachelor of arts degree. He earned a master's in journalism from North Texas in 1982.

Ferre' and his wife Sarah, have two daughters, Caitlin and Hope, and reside in Topeka.

Jordan Canfield

Associate Athletics Director for Development



Jordan Canfield is entering his fourth year as Washburn's associate athletics director for development.

Canfield returned to his alma mater after a year in private business. He was a first team all-MIAA guard for the Ichabods in 1996-97 and holds every Washburn and all but one MIAA assist record, including the career assist

mark he set as a senior. He won four conference titles in his four years on the basketball hardwood from 1992-97.

Canfield's main responsibility will be to increase scholarship dollars for one of the best small college athletic programs in the country. He oversees the fund-raising efforts of the Ichabod Club, the Athletics Department booster club, and the Washburn Athletic Fund, a major giving campaign initiated by Canfield.

Canfield is a 1996 graduate of Washburn University with a BBA degree in finance. He went on to earn an additional degree in economics in 1997 and has begun work on his MBA. He is married to Eileen Brungardt, a member of the Lady Blues volleyball team while at Washburn. The couple lives in Topeka with their son, Jordan Jett, born last year.

Karmen Byers

Assistant Athletics Director



Karmen Byers is in her first year as the Assistant Athletic Director of External Relations after joining Washburn Athletics in September.

At Washburn, Byers serves as ticket manager for all sports. She also focuses on marketing and public relations for increasing interest and attendance on Ichabods

and Lady Blues game nights.

Prior to joining the athletic department, Byers worked at Atwood Publishing in Overland Park, Kan. where she was an advertising sales executive for four different publications.

Byers is a 1999 graduate of Kansas State University with a Bachelor's Degree in journalism and advertising.

She is married to former Washburn basketball player David Byers. The couple lives in Topeka.

Janet Degginger

Assistant Athletics Director



Janet Degginger is entering her 14th year as Washburn's assistant athletics director.

Degginger returned to her alma mater in 1987 as assistant director of athletics. In that capacity, she is responsible for managing and monitoring all of the business and financial affairs of the department. In addition, she supervises personnel in the administrative office, ticket office, training room, equipment room and Petro maintenance staff.

During the 1995-96 academic year, Degginger served as the interim director of athletics during the national search for an athletic director. She also currently serves as the university's senior women's administrator.

Degginger has served on several university, conference and national committees. She is currently a member of the NCAA Professional Sports Liaison Committee and has served on a subcommittee of the NCAA Research Committee for developing a financial analysis report. She is a past secretary/treasurer of the MIAA and is currently a member of the budget committee. She is a member of Washburn's Faculty Athletics and Financial Aid committees.

Degginger is a 1967 graduate of Washburn and has done postgraduate work at Kansas. She has a son, Preston.

Gene Cassell

Sports Information Director



Gene Cassell is entering his fourth full season as Washburn Sports Information Director after starting in December 1998. Cassell is a Marshall, Mo., native and a 1997 graduate from Northwest Missouri State University, where he graduated with a Bachelor of Science in journalism accompanied

with a minor in broadcasting. At Northwest, Cassell worked in the Sports Information Office and on three university media outlets.

Besides his overseeing the media relations of Washburn's nine athletic teams, Cassell also runs game administration and is the webmaster of "The Blue Zone" - The Official Site of Washburn Athletics. Cassell is a member of CoSIDA and a member of the Publications Contest Committee.

Cassell has received 11 citations for excellence for office publications, including one best in the nation, four second place finishes and three best covers in the nation. Cassell and his wife, Regina, live in Topeka. Regina is the editor of Washburn's Alumni Magazine.

Washburn Athletics

Ron Wessel

Head Equipment Manager



Ron Wessel enters his 21st year at Washburn University as the Head Equipment Manager for the athletics department. Wessel, a native of Sierra

Vista, Ariz., is in charge of maintaining all of the athletics department's equipment needs. He attended Baker University in Baldwin City and was the school's football manager from 1976-79. Wessel then accepted the equipment manager's position at Washburn in the spring of 1980.

He is a member of the American Equipment Managers Association and became certified in 1992. Wessel has served as a District Director of the AEMA since 1993.

In addition, he serves on the Continuing Education Committee of the AEMA.

Ron lives in Topeka and enjoys all kinds of sports, traveling, science fiction and physical fitness.

Steve Ice

Head Athletic Trainer



Steve Ice enters his 20th year as the Head Athletic Trainer at Washburn University.

Ice took over the Ichabods and Lady Blues programs in the

fall of 1982 after a two-year assignment as the Associate Athletic Trainer at Lehigh University in Bethlehem, Penn.

During Ice's tenure at Washburn, the athletics training staff has seen the addition of the Petro Allied Health Center as a valuable resource for the prevention and rehabilitation of WU student-athletes.

Ice received his bachelor's degree from St. Mary of the Plains College in Dodge City, Kan., in 1977 and earned his master's from the University of Kansas in 1980. Ice also served as a graduate assistant athletic trainer for the Jayhawks from 1977 to 1979.

In addition to his duties at Washburn, Ice works in conjunction with the Orthopedic Clinic and Sports Medicine of Topeka. Steve and his wife Janis have four children; Brian, Patrick, Jenna and Alyssa.



Larry Blumberg
Faculty Athletics Representative



Susan Foremsky
Secretary For Development



Gill Herrera
Facilities Manager



Sandy Foster
Athletics Secretary



Brad Noller
Assistant Sports Information Dir.

THE ICHABOD CLUB

WASHBURN ATHLETICS

of Washburn student-athletes for the past 20 years.

Washburn Athletics depends upon the annual contributions to the Ichabod Club Scholarship Fund to continue offering scholarship aid to our student-athletes.

The mission of the Ichabod Club is simply to provide the scholarship assistance to young men and women student-athletes (tuition, fees, books, room and board) unless the contribution is restricted to a specific sport or some other specific purpose. All gifts to the Ichabod Club are tax deductible to the full extent allowable by law. Opportunities for alumni, friends, parents and boosters to become involved with the Ichabod Club program are available through pregame parties, golf tournaments, the Ichabod Club newsletter, monthly luncheons, the kick-off party and other special events.

For more information, call the Washburn Athletic Department at 785.231.1135.

The Ichabod Club is a booster club that works to promote Washburn University Athletics and provides financial support to its athletic programs. Membership in the Ichabod Club has played a major role in supporting the annual scholarship drive and making a difference in the lives

Washburn teams excel on and off the courts and fields during the 2000-01 school year

Football 5-6 / 4-5 MIAA (7th)

- MIAA Freshman of the Year: Tyler Schuerman
- All-MIAA Second Team: Brandon Rainer, Jared Barge, Chad Todd, Eric Taylor
- MIAA Honorable Mention: Joe Banks, Colon McNeal, Jermaine Smith, Buck Reuter, Corey Phipps, Clarence Williams
- MIAA Commissioner's Academic Honor Roll: Joe Banks, Joe Camp, Kyle Fowler, Patrick Hayes, Kyle Lovelady, Jonathan Mayes, Casey Mulcahy, Zac Nally, Buck Reuter, Chad Todd, Clarence Williams, Dan Wilson
- MIAA all-Academic Team: Joe Banks, Buck Reuter, Eric Taylor
- House of Diamonds Offensive MVP: Jared Barge
- Budweiser Defensive MVP: Buck Reuter

Team Cumulative GPA: 2.83

Volleyball 24-12 / 9-7 MIAA (4th)

- All-MIAA First Team: Jill Gassen
- MIAA Honorable Mention: Becky Hanish
- Verizon Academic Third Team All-District: Jill Gassen
- MIAA Commissioner's Academic Honor Roll: Arica Chaffee, Jennifer Domzalski, Jill Gassen, Becky Hanish, Becci Havlicek, Shera Karasiak, Beth Lenherr, Rhonda Ronnebaum
- MIAA all-Academic Team: Jill Gassen, Becky Hanish
- Firststar Bank MVP: Jill Gassen

Team Cumulative GPA: 3.19

Men's Basketball 29-5 / 15-3 MIAA (1st)

- MIAA Regular Season Champions
- MIAA Tournament Champions

- South Central Region Champions
- Ranked No. 5 in final Division II Bulletin Poll
- NCAA Division II Elite Eight and National Finalist
- MIAA MVP: Ewan Auguste
- All-MIAA First Team: Ewan Auguste
- All-MIAA Second Team: Ryan Murphy, Randolph Williams
- All-South Central Region First Team: Ewan Auguste
- All-South Central Region Tournament Team: Ewan Auguste
- Daktronics Division II All-America Third Team: Ewan Auguste
- Daktronics Division II South Central Region First Team: Ewan Auguste
- Daktronics Division II South Central Region Second Team: Ryan Murphy
- Basketball Times All-America First Team: Ewan Auguste
- NABC First Team All-Region: Ewan Auguste
- NABC First Team All-America: Ewan Auguste
- Division II Bulletin First Team All-America: Ewan Auguste
- Elite Eight All-Tournament Team: Ewan Auguste, Ryan Murphy
- All-South Central Region Tournament MVP: Eric Carter
- Bob Chipman: 25th Division II coach to reach 500 victories (500th vs. Southwest Baptist Feb. 3
- MIAA Commissioners' Academic Honor Roll: Ryan Tomlins
- Cecil "Pete" Peterson MVP: Ewan Auguste

Team Cumulative GPA: 2.80

Women's Basketball 13-14 / 7-11 MIAA (7th)

- MIAA Honorable Mention: Jennifer Butcher, Kristy Chapman
- MIAA Commissioner's Academic Honor Roll: Kelly Antholz, Jennifer

Athletic Success

Butcher, Bethany McGraw, Linsey Modellmog, Jenny Morrow, Erin Younkin

- MIAA all-Academic Team: Jennifer Butcher
- Security Benefit MVP: Crystal Walker

Team Cumulative GPA: 2.90

Golf

20 points - 6th at MIAA

- Finished sixth at MIAA Tournament
- Justin Jacquinot finished eighth at MIAA Tournament
- Kyle Brandt finished third at Missouri Southern Invitational
- MIAA Commissioner's Academic Honor Roll: Kyle Brandt, Curtis Dionne, Jeff Hamilton, Justin Jacquinot
- Ferrell Construction MVP: Justin Jacquinot

Team Cumulative GPA: 2.98

Softball

28-21, 8-10 MIAA / 6th

- All-MIAA First Team: Stacie Carpenter, Kristen Cheney
- All-MIAA Second Team: Brooke Lyons
- All-MIAA Honorable Mention: Amy Scott, Julie Blaufuss
- MIAA Commissioner's Academic Honor Roll: Sandy Erickson, Amy Heiman, Dawn Nachbar and Amy Scott
- NFCA North Central All-Region Team: Kristen Cheney
- Commerce Bank and Trust MVP: Stacie Carpenter

Team Cumulative GPA: 3.25

Baseball

22-24, 17-13 MIAA / 3rd

- All-MIAA First Team: Billy Crooks
- All-MIAA Second Team: Pat Colley
- All-MIAA Honorable Mention: Jason Young, Jeff Stack, Mike Cole, Dylan Smith
- MIAA Commissioner's Academic Honor Roll: Jeff Burke, Pat Colley,

Allan Cooper, Billy Crooks, Devan Hansen, John Harrison, Brigham Joy, Ben Rutherford, Andy Sorenson and Matt Wilkens

- ABCA Central all-Region Team: Billy Crooks
- MIAA all-Academic Team: Pat Colley
- Verizon Academic all-District First Team: Pat Colley
- Verizon Academic all-America Third Team: Pat Colley
- Falley's MVP: Billy Crooks

Team Cumulative GPA: 3.00

Men's Tennis

10-13, 2-2 / 4th MIAA

- MIAA Singles Champions: No. 1 Fernando Sierra
- MIAA Doubles Finalists: No. 1 Fernando Sierra and Adam Wood
- MIAA Commissioner's Academic Honor Roll: Will Heidebrecht
- ITA all-America Team: Fernando Sierra
- UMB Bank MVP: Fernando Sierra

Team Cumulative GPA: 2.66

Women's Tennis

21-3, 4-1 / 3rd at MIAA

- MIAA Singles Champions: No. 1 Marissa Moment, No. 2 Aisha Butt
- MIAA Doubles Champions: No. 2 Lindsay Sullivan and Erin Underwood
- MIAA Doubles Finalists: No. 1 Marissa Moment and Aisha Butt
- NCAA Midwest Regional Appearance
- MIAA Commissioner's Academic Honor Roll: Emily Friedstrom, Marissa Moment
- ITA Arthur Ashe Award Winner: Marissa Moment
- MIAA all-Academic Team: Erin Underwood
- Bank of America MVP: Marissa Moment

Team Cumulative GPA: 2.83

The Washburn Softball Complex

The Washburn Lady Blues have played every season of action at the Washburn Softball Complex. Prior to the 2001 season, the facility underwent its first major upgrade since the first season of 1970.

A new press box was constructed with restrooms, concession stands, training table and storage on the lower level and a working press area on the second level. Before the start of play in the 2002 season, the facility was completed with the addition of a public address system.

The complex houses two fields with 200 foot fences all around the outfield. Each field has two separate microphone systems for announcing.

The past three seasons, the Lady Blues have enjoyed great success playing at home compiling a 42-11 (.792) record. The first game played in the complex with the new press box was a doubleheader sweep over Bethany winning 13-0 and 8-0.

The first run was scored by Stacie Carpenter who scored via the first hit - a home run by Katie Schmidt in the second inning.



Kim Newbern

Lady Blues Head Coach



Kim Newbern begins her sixth season at the helm of the Lady Blues softball program.

During the 1999 season Newbern led the Lady Blues program to its first ever

NCAA Regional appearance. In four seasons as the Lady Blues' head coach, Newbern has compiled a 161-100 record.

Newbern has also recorded the second highest winning percentage in Washburn softball coaching history with a .617 winning clip.

Newbern came to Washburn after serving as the assistant softball coach at the University of Kansas in 1996.

Newbern, a 1994 graduate of the

University of Kansas, was the assistant coach at Oklahoma State University before to her appointment with the KU program.

While serving as the restricted earnings coach at Oklahoma State, Newbern helped the Cowgirls to a 36-16 record, a Big Eight Conference title with a 13-3 mark and a NCAA Regional berth.

Newbern played softball collegiately at Kansas and at Hutchinson Community College. While at HCC,

she was named to the NJCAA All-America team and was a two-time National Softball Coaches Association All-America selection.

At KU, Newbern was a two-year starter at third base for the Jayhawks and helped Kansas to a 68-35-1 record. She was second on the team in hitting as a senior and was in the top ten in the Big Eight for the 37-20 Jayhawks.

Newbern was an academic all-Big Eight selection in 1994 and a 1993 Phillips 66 Classroom Champion. Newbern has used her dedication in the classroom to motivate her student-athletes as well. The 1999 Lady Blues finished the academic year with an overall GPA of 3.25, which was the best team cumulate GPA in the athletic department.

The Wichita native is an active member of the National Softball Coaches Association and a member of the association's awards committee.



Newbern at Washburn

1997 . . . 27-21 (.563)

1998 . . . 27-14 (.659)

1999 . . . 41-24 (.651)

2000 . . . 38-20 (.655)

2001 . . . 28-21 (.571)

Five-Year

Record

161-100 (.617)

Washburn Coaching Staff

Newbern vs all opponents

vs the MIAA

Central Missouri	6-8
Emporia State	9-5
Missouri-Rolla	9-1
Missouri Southern	5-7
Missouri Western	9-5
Northwest Missouri	10-5
Pittsburg State	10-7
Southwest Baptist	10-1
Truman State	7-9

Record vs the MIAA **75-48**

vs Kansas Schools

Baker	4-0
Bethany	6-0
Fort Hays State	8-4
Kansas	0-2
Newman	4-0
Wichita State	1-1

Record vs Kansas Schools **23-7**

vs all other four-year schools

Abilene Christian	0-1
Adelphi	1-0
Arkansas-Monticello	1-2
Augustana (S.D.)	0-4
Buena Vista	0-1
Cameron (Okla.)	1-0
Central Arkansas	4-1
Central (Iowa)	2-1
Central Oklahoma	1-1
Coe College	0-1
Colorado College	1-0
Columbia (Mo.)	1-0
Delta State	1-0
East Stroudsburg	3-0
Eastern New Mexico	3-0
Erskine	2-0
Eureka	1-0
Florida Southern	1-0

Florida Tech	0-1
Georgia College	1-0
Grace College	1-0
Henderson State (Ark.)	1-0
Incarinate Word.	0-1
Lanburth	0-1
Lincoln (Mo.)	3-0
Lipscomb	1-0
Minnesota-Duluth	2-0
Minnesota-Mankato	2-0
Mississippi College	1-0
Missouri-Kansas City	1-1
Morningside	0-1
Nebraska-Kearney	2-7
Nebraska-Omaha	0-8
North Dakota	1-0
North Dakota State	0-4
Northern Colorado	3-0
Oklahoma City	0-1
Oklahoma Panhandle	1-0
Olivet Nazarene	0-2
Park University	1-0
Rollins College	1-0
South Connecticut State	0-1
South Dakota	3-2
South Dakota State	2-0
Southern Colorado	2-0
Southwest State (Minn.)	3-0
St. Thomas Aquinas (N.Y.)	1-0
Tarleton State	0-1
Vanguard	1-0
Wayne State (Mich.)	1-0
Wayne State (Neb.)	2-0
West Florida	1-1
Western New Mexico	1-1

Record vs other opponents **62-45**

Newbern at Washburn Year By Year

Year	Record	MIAA Finish	Postseason
1997	27-21 (.563)	4th	MIAA-Third
1998	27-14 (.659)	4th	MIAA-Third
1999	41-24 (.651)	2nd	NCAA-Regionals, 4th
2000	38-20 (.655)	T-1st	MIAA-Second
2001	28-21 (.617)	6th	MIAA-Fifth

Five-Year Record - 161-100 (.617)

Liz Bainter

Lady Blues Assistant Coach



Former Lady Blues' catcher Liz Bainter begins her fifth season as an assistant coach for Washburn. She works primarily in the area of practice

planning, game preparation and with the outfielders and catchers.

Bainter played one season for the Lady Blues in 1997. She batted .255 with 15 RBI while starting all 48 games behind the plate for the Lady Blues.

Before playing at Washburn, Bainter was a member of the Southern Conference championship team at UT-Chattanooga.

At Butler County as a sophomore, she was named first team all-Jayhawk Conference and was a second team selection as a freshman.

A native of Salina, Bainter was a three-time all-city selection at Salina South High School. She majored in nursing at Washburn and graduated in December of 1998. Bainter also works at Stormont-Vail hospital as a registered nurse.

Washburn Coaching Records

Washburn Coaches

Jan Nuzman	(1970-71)
Connie Floyd	(1972-74)
Dennis McCool	(1975)
Dennis Bean	(1976)
Bob Chipman	(1977)
Jessie Furrer	(1978)
Patty Dick	(1979-82)
Linda Moley	(1983-87)
Kelly Osburn	(1987-94)
Kevin Blaskowski	(1995-96)
John Punzo	(1996)
Kim Newbern	(1997-pr.)

By Victories

1. Osburn	200
2. Newbern	161
3. Moley	157
4. Dick	40

Coaching Record By Percentage

1. Moley	157-71 (.689)
2. Newbern	161-100 (.617)
3. Osburn	200-131-1 (.604)
4. Floyd	10-8 (.556)

(Minimum two seasons coached)



2001 Lady Blues Roster

Numerical Roster

#	Name	Pos	B-T	HT	CL	Hometown/Previous School
3	Brooke Lyons*	OF	R-R	5-5	JR	Topeka, Kan./Kansas City Community College
4	Molly Gleisberg*	OF	B-R	5-6	SO	Olathe, Kan./Olathe East High School
5	Holly Reichel*	P	L-R	5-8	SO	Mexico, Mo./Mexico High School
7	Jackie Sells	UT	R-R	5-3	FR	Lee's Summit, Mo./Lee's Summit High School
8	Jennifer Fletcher*	3B	R-R	5-4	SO	DeSoto, Kan./DeSoto High School
9	Katie Gregg	P	R-R	5-7	FR	Overland Park, Kan./Notre Dame de Sion High School
11	Dara Clouse*	1B	L-L	5-6	SO	Silver Lake, Kan./Barton County Community College
12	Ashley Perkins	P	R-R	5-7	FR	Shawnee, Kan./Mill Valley High School
13	Julie Blaufuss**	C	R-R	5-10	JR	Lenexa, Kan./Shawnee Mission Northwest High School
14	Crystal Wittlinger	2B	R-R	5-7	FR	Olathe, Kan./Olathe North High School
16	Dawn Nachbar***	2B	R-R	5-4	SR	Shawnee, Kan./Shawnee Mission Northwest High School
17	Kristen Cheney***	OF	L-L	5-7	SR	Wichita, Kan./Bishop Carroll High School
18	Katie Schmidt*	SS	R-R	5-5	SO	Topeka, Kan./Seaman High School
19	Jackie Horn	C	R-R	5-10	FR	Basehor, Kan./Basehor-Linwood High School
20	Keri Tanner	3B	R-R	5-6	FR	Overland Park, Kan./Olathe East High School

* =letters earned

Alphabetical Roster

#	Name	Pos	B-T	HT	CL	Hometown/Previous School
13	Julie Blaufuss**	C	R-R	5-10	JR	Lenexa, Kan./Shawnee Mission Northwest High School
17	Kristen Cheney***	OF	L-L	5-7	SR	Wichita, Kan./Bishop Carroll High School
11	Dara Clouse*	1B	L-L	5-6	SO	Silver Lake, Kan./Barton County Community College
8	Jennifer Fletcher*	3B	R-R	5-4	SO	DeSoto, Kan./DeSoto High School
4	Molly Gleisberg*	OF	B-R	5-6	SO	Olathe, Kan./Olathe East High School
9	Katie Gregg	P	R-R	5-7	FR	Overland Park, Kan./Notre Dame de Sion High School
19	Jackie Horn	C	R-R	5-10	FR	Basehor, Kan./Basehor-Linwood High School
3	Brooke Lyons*	OF	R-R	5-5	JR	Topeka, Kan./Kansas City Community College
16	Dawn Nachbar***	2B	R-R	5-4	SR	Shawnee, Kan./Shawnee Mission Northwest High School
12	Ashley Perkins	P	R-R	5-7	FR	Shawnee, Kan./Mill Valley High School
5	Holly Reichel*	P	L-R	5-8	SO	Mexico, Mo./Mexico High School
18	Katie Schmidt*	SS	R-R	5-5	SO	Topeka, Kan./Seaman High School
7	Jackie Sells	UT	R-R	5-3	FR	Lee's Summit, Mo./Lee's Summit High School
20	Keri Tanner	3B	R-R	5-6	FR	Overland Park, Kan./Olathe East High School
14	Crystal Wittlinger	2B	R-R	5-7	FR	Olathe, Kan./Olathe North High School

* =letters earned

by Gene Cassell
Sports Information Director

A youth movement is afoot for the Washburn Lady Blues softball team. Coming off last season's 28-21 record and 8-10 mark in the MIAA, a young team with eight underclassmen has evolved into a group of older and wiser players.

The 2002 version of the Lady Blues has 11 underclassmen for the season.

"We are a young team on paper," sixth-year head coach Kim Newbern said. "But I do not look at us as a young team. We have new players who are mentally tough and are ready to have a great season.

"They all understand the game and they played together well in the fall, if we keep that up, we will be successful."

Outlook

On defense, the Lady Blues are returning seven starters. Missing from last season's infield will be all-MIAA first team selection first baseman Stacie Carpenter and center fielder Amy Scott.

Filling those gaps will be sophomore first baseman Dara Clouse and sophomore outfielder Molly Gleisberg. Both Lady Blues had their share of innings with Clouse starting in five different positions in the field for Washburn. Gleisberg played in 33 games as a freshman in the outfield and as a pinch-hitter or designated player.

There are also six talented freshmen who will challenge for playing time as well.

"We have done a good job of replacing the talent that has graduated," Newbern said. "We have added depth at almost every position for the second straight season."

Offensively, the Lady Blues return four of their top six hitters in the line up and two of the top six in the MIAA. Leading the way is junior outfielder Brooke Lyons. Lyons led the team with her .393 batting average and finished fifth in the MIAA. Newbern looks to bat Lyons in the lead-off

spot.

Fellow outfielder, senior Kristen Cheney, hit .391 wrapping up the 2001 campaign with a 19-game hitting streak. She led the Lady Blues with 63 hits scoring a team-high 41 runs.

Infield

Around the infield, four Lady Blues return from last season with the combination of Clouse at first, senior Dawn Nachbar at second, sophomore Katie Schmidt at short stop and sophomore Jennifer Fletcher at third and junior catcher Julie Blaufuss behind the plate. Although Clouse wasn't a regular starter at first, of her five different positions she started, the most were at first base.

Nachbar is one of the best fielding Lady Blues in school history with her .980 fielding percentage.

At third base Fletcher, took over midway during the 2001 season finishing with a 91 percent fielding mark.

Schmidt returns for a second year to the Lady Blues' infield. She led the Lady Blues with 113 assists from the shortstop position collecting only 15 errors in 49 games. On the offensive side, Schmidt led the Lady Blues with six home runs batting .272.

Behind the plate, Blaufuss started 48 of the 49 games for the Lady Blues after starting 31 games as a freshman. Blaufuss hit .344 last season driving in 27 runs with 53 hits.



Season Preview

Outfield

Around the outfield, Newbern is looking at the combination of Gleisberg in left, Lyons in center - moving from left, and Cheney in right.

Gleisberg started 12 games in left field batting .279 with 19 hits and eight RBI. She was also perfect in stolen base attempts swiping four.

Lyons will patrol the middle of the outfield after leading the team with four triples.

In right field, two-year starter Kristen Cheney will carry her 19-game hitting streak into the No. 3 slot in the line-up.



Pitchers

The lone returning pitcher for the Lady Blues is sophomore Holly Reichel. Gone from 2001's rotation is Amy Heiman. Heiman was 12-10 last year and one of the top pitchers in Lady Blues' history finishing her career with 65 wins, rewriting the record books with her 25 career shutouts and

137 appearances.

Reichel is coming off shoulder surgery in the fall and looks ready to be the Lady Blues No. 1 starter.

"After her shoulder surgery, Holly has been throwing harder than last season and from what she is telling me, she feels better than ever," Newbern said.

Reichel started 20 games compiling a 11-8 record pitching 123 innings and striking out 83.

Newcomers

The Lady Blues have a group of six talented freshmen who will all compete for playing time in their first season as Lady Blues.

"I am thrilled about our recruits," Newbern said. "We have a solid mix of players who will make an immediate impact and add depth and skill to our team."

Pitcher Ashley Perkins chalked up a 60-8 record and was named the Kansas City Star's 2001 all-Metro Player of the Year. Perkins chose

Washburn over Division I Auburn University in Alabama.

Third baseman Keri Tanner was a first team all-conference selection her senior season after leading Olathe East to



a class 6A state championship, driving in a school record 29 runs. She also lead the team in batting average (.406), hits (28), triples (five), home runs (three) and on-base percentage (.461).

Pitcher Katie Gregg was a first team all-district selection and named to the Kansas City Star's all-Metro team. She led the Notre Dame de Sion Storm to a Class 3A state title when she finished the season 24-3 with a 0.35 ERA.

Utility Jackie Sells was named Lee's Summit's defensive MVP during the 1999 and 2000 seasons. She was also an all-district selection in 1998, 1999 and 2000.

Catcher Jackie Horn recorded a .378 batting average and was a first team all league choice three times at Basehor-Linwood High School.

Second baseman Crystal Wittlinger was a first team all-Metro selection after her junior and senior seasons at Olathe North and did not commit an error her senior season.

MIAA

The MIAA is going to be tough as usual with 2001 Champ Missouri Southern heading the list. But they will be challenged.

"I think this conference race is wide open with many teams having a shot to win it," Newbern said.

The Lady Blues finished sixth in the MIAA last season after dropping their first eight games, before winning eight of their final 12 games.

Also ranked in the final NFCA Poll was Truman State. The Bulldogs have undergone a coaching change, but she is a familiar face. Kristy Bredbenner takes over for Kristy Schroeder. Bredbenner, the 2001 MIAA MVP, is taking over her first coaching position.

Region

The road to the regional championship must go through the defending NCAA Division II Champ Nebraska-Omaha. The Mavericks finished last season's championship run with a 54-6 record.

Once again, the MIAA has been paired with the North Central Conference for regionals. North Dakota State, Augustana, St. Cloud State were all ranked at some time last season in the national polls.

"It's a tough regional draw," Newbern said. "But we believe we can compete with the best teams in the nation and the best teams have come from this region with UNO winning it all last season and North Dakota State the season before."





Dawn Nachbar

2B/SS • R-R • 5-4 • Senior

Shawnee, Kan./Shawnee Mission Northwest High School

As a junior in 2001: Started 47 games at second base for the Lady Blues collecting 27 hits and scoring 18 runs. Was named to the MIAA Commissioner's Academic Honor Roll. She enters her senior season with a .980 fielding percentage, the best fielding percentage in Lady Blues history by a position player.

As a sophomore in 2000: Started 53 games for the Lady Blues playing in 55. Hit .261 with 35 hits scoring 14 runs with six doubles in 134 at-bats. Named all-MIAA Second Team at second base after recording a nearly perfect .996 fielding percentage with one error in 244 chances, tying a Washburn record from 1984. Named to the MIAA Commissioner's Academic Honor Roll.

As a freshman in 1999: Appeared in 32 games starting 23 hitting .159. Recorded 10 hits including two doubles and drove in seven runs and scoring five runs.

Background: A three-sport athlete at Shawnee Mission Northwest High School. A NSCA All-America Scholar Athlete. A member of the 4.0 honor roll throughout high school. Played on the 1997 6A State Champions, that had an overall combined team GPA of 3.937. As a senior, named all-Metro First Team and all-Sunflower League First Team. An all-conference selection as a junior.

Personal: Born Aug. 11, 1980. Daughter of Janet Kelly and the late Donald Nachbar. Majoring in finance.

Nachbar at Washburn

Year	Avg.	GP-GS	AB	R	H	2B	3B	HR	RBI	TB	SLG	BB	HP	SO	OB%	SF	SH	SB-A	PO	A	E	Fld
1999	.159	32-23	63	5	10	2	0	0	7	12	.190	9	1	6	.274	0	4	0-0	12	4	2	.889
2000	.261	55-53	134	14	35	6	0	0	11	41	.306	6	2	8	.301	1	7	0-1	116	127	1	.996
2001	.237	47-47	114	18	27	1	1	1	8	33	.289	15	1	11	.328	1	6	2-2	98	91	6	.969
Totals	.231	134-123	311	37	72	9	1	1	26	86	.276	30	4	25	.306	2	17	2-3	226	222	9	.980



Lady Blues Profiles



Kristen Cheney

OF • L-L • 5-7 • Senior

Wichita, Kan./Bishop Carroll High School

As a junior in 2001: Started 48 games leading the team with 63 hits and finishing second with a .391 batting average. Finished with 15 stolen bases in 16 attempts and scored a team-high 41 runs. Finished second in MIAA in runs scored, fourth in RBI, fifth in on-base percentage, seventh in stolen bases and in slugging percentage and eighth in home runs. Was named to the NFCA Second team all-region squad and the all-MIAA First team and to the MIAA Commissioner's Academic Honor Roll as well. She will carry a

19-game hitting streak into her senior season. Led the Lady Blues with 19 multiple hit games and second on team with eight multiple RBI games. Had five RBI tying school record against Newman.

As a sophomore in 2000: Appeared in 47 games starting 42 hitting .283. Recorded 36 hits in 127 at-bats including five doubles and two home runs. Finished second on the team in sacrifice hits with 11 and stole four bases in five attempts. Named to the MIAA Commissioner's Academic Honor Roll.

As a freshman in 1999: Started 13 games appearing in 22. Recorded four hits in 36 at-bats and drove in two runs while scoring five. Recorded 36 putouts without an error in the field.

Background: A member of the first team all-City squad as a third baseman from 1995 to 1998. Had a single season high of ten triples and five home runs. A member of the first team all-City and all-State volleyball team in 1998. Named to the first team all-City and second team all-State basketball team in 1998. Bishop Carroll Student Athlete of the Year and Lynette Woodard Outstanding Female Athlete of the Year in Wichita.

Personal: Born Feb. 17, 1980. Daughter of Tom and Julie Cheney. Majoring in business.



Cheney at Washburn

Year	Avg.	GP-GS	AB	R	H	2B	3B	HR	RBI	TB	SLG	BB	HP	SO	OB%	SF	SH	SB-A	PO	A	E	Fld
1999	.111	22-13	36	5	4	1	0	0	2	5	.128	0	1	10	.135	0	2	0-0	36	0	0	1.00
2000	.283	47-42	127	26	36	5	0	2	12	47	.370	6	1	12	.319	1	11	4-5	70	4	4	.949
2001	.391	48-48	161	41	63	8	2	4	33	87	.540	11	3	14	.440	0	7-15	16	48	1	2	.961
Totals	.318	117-103	324	72	103	14	2	6	47	139	.429	17	5	36	.360	1	2019-21	154	5	6	.962	



Julie Blaufuss

C • R-R • 5-10 • Junior

Lenexa, Kan./Shawnee Mission Northwest High School

As a sophomore in 2001: Appeared in all 49 games starting 48 for Washburn finishing fourth on the team with a .344 batting average. Against Augustana, she collected five hits which set a new Lady Blue record. She finished second on the team with five home runs and finished seventh in the MIAA. She was named to the MIAA Honorable Mention team.

As a freshman in 2000: Started 56 games for the Lady Blues at catcher where she threw out 14 of 31 would-be base stealers. Her five home runs were second on the team. Against Wayne State, she was 4 of 6 in the doubleheader including two 3-run home runs and nine RBI. She became the fourth Lady Blue to drive in five RBI in one game in the second game against Wayne State. Recorded 44 hits

and drove in 31 RBI on the season. Perfect behind the plate fielding with no errors in 152 chances with 22 assists.

Background: Was a member of the 1997 softball Class 6A State Champions at Shawnee Mission Northwest and named first team all-Sun County Catcher. Was awarded three academic letters in high school and a 1999 recipient of the Presidential Scholar Athlete Award.

Personal: Born Jan. 7, 1981. Daughter of Jim and Marilyn Blaufuss. Majoring in business and marketing.



Blaufuss at Washburn

Year	Avg.	GP-GS	AB	R	H	2B	3B	HR	RBI	TB	SLG	BB	HP	SO	OB%	SF	SH	SB-A	PO	A	E	Fld
2000	.254	56-56	173	14	44	4	0	5	31	63	.364	10	0	23	.290	3	7	3-4	130	22	0	1.00
2001	.344	49-48	154	23	53	9	0	3	27	71	.461	8	1	12	.378	1	2	0-0	194	19	4	.982
Totals	.297	105-104	327	37	97	13	0	8	58	134	.409	18	1	35	.331	4	9	3-4	324	41	4	1.00

Lady Blues Profiles



Brooke Lyons

Outfield • R-R • 5-5 • Junior

Topeka, Kan./Kansas City Community College

As a sophomore in 2001: Bursting on the scene with a .393 batting average to lead the team playing in 46 games starting 41 in the outfield. Was named second team all-MIAA. Her batting average was second in the MIAA and she finished fourth in triples, and sixth in slugging percentage and sixth in on-base percentage.

Background: At Kansas City Community College, was named first team all-Jayhawk conference, first team all-region and second team all-America honors after leading the team with 75 hits and hitting .387 which was second on the team. Led the Blue Devils with 11 triples and a .598 slugging percentage. At Highland Park, was second team all-city her freshman season and first team all-city her final three years and team MVP each season as well as first team all-conference all four years. Also played soccer, volleyball and basketball.

Personal: Born April 3, 1981. Daughter of Bruce and Vicki Lyons. Majoring in criminal justice.



Lyons at Washburn

Year	Avg.	GP-GS	AB	R	H	2B	3B	HR	RBI	TB	SLG	BB	HP	SO	OB%	SF	SH	SB-A	PO	A	E	Fld
2001	.393	46-41	122	24	48	4	4	2	19	66	.541	10	0	12	.439	0	14	10-12	37	2	4	.907
Totals	.393	46-41	122	24	48	4	4	2	19	66	.541	10	0	12	.439	0	14	10-12	37	2	4	.907



Dana Clouse

Utility • L-L • 5-6 • Sophomore

Silver Lake, Kan./Barton County Community College

As a freshman in 2001: Played in 45 games starting 42 for the Lady Blues in five different positions on the field starting nine at first base, six at shortstop, two at catcher, one at third base and 24 as the designated player. She also batted in six different slots in the batting line-up. Hit .282 driving in 16 runs and scoring 12 with 37 base hits.

Background: At Barton County, played only volleyball advancing to national tournament. Averaged 6.6 assists per game as setter. At Silver Lake High School, was an all-Mid-East selection four times in softball, three in volleyball and two years in basketball. A setter on the state championship volleyball team. Set a new school record for RBI her senior season with 29. Career high school batting average was .426, fourth in the all-time record books.

Personal: Born March 11, 1981. Daughter of Jim and Judy Clouse. Majoring in health and fitness.



Clouse at Washburn

Year	Avg.	GP-GS	AB	R	H	2B	3B	HR	RBI	TB	SLG	BB	HP	SO	OB%	SF	SH	SB-A	PO	A	E	Fld
2001	.282	45-42	131	12	37	5	0	0	16	42	.321	6	0	9	.314	0	8	0-0	90	19	7	.940
Totals	.282	45-42	131	12	37	5	0	0	16	42	.321	6	0	9	.314	0	8	0-0	90	19	7	.940

Lady Blues Profiles



Molly Gleisberg

Outfield • B-R • 5-6 • Sophomore

Olathe, Kan./Olathe East High School

As a freshman in 2001: Appeared in 33 games starting 20 collecting 19 hits and driving in seven runs. Scored 13 runs. Was a perfect four of four in stolen bases. Collected three hits in 11 at-bats as a pinch hitter with one RBI and scoring two runs.

Background: A four-year letterwinner at Olathe East. Received first team 6A all-state honors as a senior and second team all-state, all-class accolades. Was also named first team all-Metro, all-Johnson County, all-Sun County and all-Sunflower league. As a junior was named first team all-Sunflower league and second team all-Metro. Was named second team all-league as a freshman. Team finished first in state her sophomore year. A three-year member of the honor roll.

Personal: Born July 20, 1982. Daughter of John and Connie Gleisberg. Majoring in education.



Gleisberg at Washburn

Year	Avg.	GP-GS	AB	R	H	2B	3B	HR	RBI	TB	SLG	BB	HP	SO	OB%	SF	SH	SB-A	PO	A	E	Fld
2001	.279	33-20	68	13	19	1	0	0	8	20	.294	5	0	20	.329	0	2	4-4	11	1	0	1.00
Totals	.279	33-20	68	13	19	1	0	0	8	20	.294	5	0	20	.329	0	2	4-4	11	1	0	1.00



Jennifer Fletcher

Infield • R-R • 5-4 • Sophomore

DeSoto, Kan./DeSoto High School

As a freshman in 2001: Appeared in 42 games starting 35 hitting .221 with 15 hits, two doubles a triple and eight RBI. Finished third on the team with 78 assists from third base.

She drove in a career-high three runs with a triple against Southwest State in a 10-2 win.

Background: A member of the honor roll. A preseason pick for one of the best shortstops in the Kansas City area by the *Shawnee Journal Herald*. Hit .452 and recorded a .986 fielding percentage. A three-year letterwinner. Team won state her junior season and finished third her senior season.

Personal:

Born April 28, 1982.

Daughter of William and Katherine Fletcher. Her sister, Sissy, is an infielder for the softball team at Central Missouri. Majoring in marketing.



Fletcher at Washburn

Year	Avg.	GP-GS	AB	R	H	2B	3B	HR	RBI	TB	SLG	BB	HP	SO	OB%	SF	SH	SB-A	PO	A	E	Fld
2001	.221	42-35	68	13	15	2	1	0	8	19	.279	3	0	14	.254	0	5	0-1	33	78	11	.910
Totals	.221	42-35	68	13	15	2	1	0	8	19	.279	3	0	14	.254	0	5	0-1	33	78	11	.910

Lady Blues Profiles



Holly Reichel

Pitcher • L-R • 5-8 • Sophomore
Mexico, Mo./Mexico High School

As a freshman in 2001: On the mound she started 20 games throwing a team-leading three shutouts with a 2.55 ERA leading the team with 83 strikeouts. Pitched a season-high 10 and two-thirds innings against Augustana striking out a career-high 10. Finished fourth in MIAA in strikeouts per seven innings with a 4.71 ratio. Batted .156 with five hits in 32 at bats driving in four runs and scoring three times.

Background: Named all-North Central Missouri Conference following her sophomore, junior and senior seasons as well as all-district during the same time span. Received all-state honors as a junior. Named team MVP all four seasons. Had a strikeout average per game of 17. A member of the National Honor Society and a four-year member of the honor roll. Received 3.0 Principal's Award and was class Valedictorian. Played basketball as well.

Personal: Born May 21, 1982. Daughter of Keith and Nancy Reichel. Undecided on major.



Reichel at Washburn batting stats

Year	Avg.	GP-GS	AB	R	H	2B	3B	HR	RBI	TB	SLG	BB	HP	SO	OB%	SF	SH	SB-A	PO	A	E	Fld
2001	.156	30-22	32	3	5	1	0	1	4	9	.281	0	0	8	.156	0	2	0-0	7	41	3	.941
Totals	.156	30-22	32	3	5	1	0	1	4	9	.281	0	0	8	.156	0	2	0-0	7	41	3	.941

Reichel at Washburn pitching stats

Year	ERA	W-L	APP	GS	CG	SO/CO	SV	IP	H	R	ER	BB	SO	2B	3B	HR	AB	Avg	WP	HB	BK	SF	SH
2001	2.55	11-8	29	20	8	3/2	1	123.1	123	56	45	43	83	14	2	7	488	.252	7	0	1	1	15
Totals	2.55	11-8	29	20	8	3/2	1	123.1	123	56	45	43	83	14	2	7	488	.252	7	0	1	1	15



12

Katie Schmidt

Infield • R-R • 5-5 • Sophomore

Topeka, Kan./Seaman High School

As a freshman in 2001: One of two Lady Blues to start all 49 games in which she hit a team-leading six home runs finishing fourth on the team with 25 RBI. Also finished second on the team with nine doubles. She finished 13th in the MIAA in

slugging percent-

age and third in home runs. Had a career high three hits against Central Oklahoma in three at bats.

Background: Named team MVP her senior season. An all-state selection her junior season.

Received all-Centennial League honors her sophomore through senior seasons and an all-city selection during the same span. A member of the National Honor Society and a Cum Laude graduate.

Personal: Born Sept. 8, 1982. Daughter of Dale and Manya Schmidt. Undecided on major.



Schmidt at Washburn

Year	Avg.	GP-GS	AB	R	H	2B	3B	HR	RBI	TB	SLG	BB	HP	SO	OB%	SF	SH	SB-A	PO	A	E	Fld
2001	.272	49-49	136	20	37	9	0	6	25	64	.471	9	2	23	.327	0	9	1-1	58	113	15	.919
Totals	.272	49-49	136	20	37	9	0	6	25	64	.471	9	2	23	.327	0	9	1-1	58	113	15	.919

Lady Blues Profiles



Katie Gregg

Pitcher • R-R • 5-7 • Freshman

Overland Park, Kan./Notre Dame de Sion

Background: Gregg was a first team all-district selection and named to the Kansas City Star's all-Metro team. She lead the Storm to a Class 3A state title when she finished the season 24-3 with a 0.35 ERA. She struck out 175 batters in 155 innings while walking only five. She was also a first team all-conference selection, all district and all-state selection while attending

Raymore-Peculiar High School in Missouri.

Personal: Born Feb. 21, 1983. Daughter of Michael and Rebecca Gregg. Majoring in journalism.



Jackie Horn

Catcher • R-R • 5-10 • Freshman

Basehor, Kan./Basehor-Linwood High School

Background: Horn recorded a .378 batting average and was a first team all league choice three times. She was also a four-year letterman in basketball and a two-year letterman in volleyball.

Personal: Born Sept. 16, 1982. Daughter of Stanley and Karen Horn. Majoring in business.



Ashley Perkins

Pitcher • R-R • 5-7 • Freshman

Shawnee, Kan./Mill Valley High School

Background: Perkins chalked up a 60-8 record and was named the Kansas City Star's 2001 all-Metro Player of the Year leading Mill Valley to a second place state finish after falling to Topeka's Hayden High School in the state tournament. She was a four-year all-conference selection and a two-year member of the Kansas City Star's all-Metro first team, the Kansas City Star's

Freshman and Sophomore of the Year and a three-year all-state selection. As a junior, Perkins pitched eight shutouts, four no-hitters and two perfect games. Perkins chose Washburn over Division I Auburn University in Alabama.

Personal: Born Feb. 9, 1983. Daughter of Mike and Elaine Perkins. Majoring in marketing.



7

Jackie Sells

Utility • R-R • 5-3 • Freshman

Lee's Summit, Mo./Lee's Summit High School

Background: At Lee's Summit High, Sells was named the team's defensive MVP during the 1999 and 2000 seasons. She was also an all-district selection for the 1998, 1999 and 2000 seasons. She was also a second team all-conference selection during the 1998 and 1999 seasons and an honorable mention choice in 2000.

Personal: Born Nov. 16, 1982. Daughter of Jay and Kathy Sells. Majoring in secondary education.



20

Keri Tanner

3B • R-R • 5-6 • Freshman

Overland Park, Kan./Olathe East High School

Background: Tanner was a first team all-conference selection her senior season after leading the Hawks to a class 6A state championship, driving in a school record 29 RBI. She also lead the team in batting average (.406), hits (28), triples (five), home runs (three) and on-base percentage (.461). She tied for the team lead with seven doubles. She was a part of two state championship teams at Olathe East. She was a 1998 honorable mention all-Metro selection and a 1998 all-conference selection. She was named FastPitch World's high school all-state all-American in 1998. In 1999, she was a second team all-metro choice and a first team all-state honoree.

Personal: Born May 12, 1983. Daughter of Mark and Kathy Tanner. Undeclared on a major.



14

Crystal Wittlinger

Infield • R-R • 5-7 • Freshman

Olathe, Kan./Olathe North High School

Background: Wittlinger was an all-conference selection at Olathe North in softball and basketball. She was flawless at second base going the entire season without an error for the Eagles. She was a first team all-Metro selection after her junior and senior seasons and an all-Olathe first team choice all four years. Was also named to Who's Who Among High School Students following

her senior year.

Personal: Born April 13, 1983. Daughter of Mark Wittlinger and Linda Bergant. Majoring in criminal justice.

2001 In Review



***2001 Washburn
Lady Blues MVP
Stacie Carpenter
was a two-time
all-MIAA First
baseman.***

2001 Final Stats

Final Record: 28-21

Home: 15-4 • Away: 3-8 • Neutral: 10-9 • MIAA: 8-10

Batting	Avg.	GPCS	AB	R	H	2B	3B	HR	RBI	TB	SLG	BB	HP	SO	OB%	SF	SH	SBA	PO	A	E	Fld
Lyons	.393	46-41	122	24	48	4	4	2	19	66	.541	10	0	12	.439	0	14	10-12	37	2	4	.907
Cheney	.391	48-48	161	41	63	8	2	4	33	87	.540	11	3	14	.440	0	7	15-16	48	1	2	.961
Carpenter	.370	48-47	146	33	54	14	3	5	37	89	.610	13	4	19	.430	2	5	6-6	334	27	7	.981
Blaufuss	.344	49-48	154	23	53	9	0	3	27	71	.461	8	1	12	.378	1	2	0-0	194	19	4	.982
Heiman	.321	30-19	28	0	9	0	0	0	4	9	.321	0	0	6	.321	0	1	0-0	7	50	7	.891
Clouse	.282	45-42	131	12	37	5	0	0	16	42	.321	6	0	9	.314	0	8	0-0	90	19	7	.940
Gleisberg	.279	33-20	68	13	19	1	0	0	8	20	.294	5	0	20	.329	0	2	4-4	11	1	0	1.000
Jobe	.273	22-3	11	7	3	0	1	0	1	5	.455	1	0	3	.333	0	1	2-3	1	0	0	1.000
Schmidt	.272	49-49	136	20	37	9	0	6	25	64	.471	9	2	23	.327	0	9	1-1	58	113	15	.919
Scott	.263	49-49	137	19	36	4	0	0	7	40	.292	3	1	11	.284	0	11	1-1	58	6	0	1.000
Nachbar	.237	47-47	114	18	27	1	1	1	8	33	.289	15	1	11	.328	1	6	2-2	98	91	6	.969
Fletcher	.221	42-35	68	13	15	2	1	0	8	19	.279	3	0	14	.254	0	5	0-1	33	78	11	.910
Reichel	.156	30-22	32	3	5	1	0	1	4	9	.281	0	0	8	.156	0	2	0-0	7	41	3	.941
Erickson	.111	15-10	9	0	1	0	0	0	0	1	.111	0	0	5	.111	0	0	0-0	6	18	2	.923
Steffan	.111	9-9	9	2	1	1	0	0	2	2	.222	1	0	3	.200	0	0	1-1	5	15	4	.833
TM	.000	1-0	0	0	0	0	0	0	0	0	.000	0	0	0	.000	0	0	0-0	0	0	0	.000

Totals .308 49-49 1326 228 408 59 12 22 199 557 .420 85 12 170 .354 4 73 42-47987 481 72 .953

Opps. .253 49-49 1310 160 331 36 4 18 133 429 .327 107 8 178 .312 3 40 22-31972 445 69 .954

LOB - Team (304), Opp (325). DPs turned - Team (14), Opp (13). IBB - Team (1), Blaufuss 1, Opp (4). Picked off - Lyons 1.

Pitching	ERA	W-L	APP	GS	CG	SO/CO	SV	IP	H	R	ER	BB	SO	2B	3B	HR	AB	Avg	WP	HB	BK	SF	SH
TM	0.00	0-0	1	0	0	0/0	0	0.0	0	3	0	0	0	0	0	0	0	.000	0	0	0	0	0
Heiman	1.82	12-10	30	19	14	2/1	1	158.0	163	80	41	48	79	20	1	9	639	.255	9	7	0	1	19
Erickson	2.06	5-3	12	10	4	2/1	0	47.2	45	21	14	16	16	2	1	2	183	.246	1	1	0	1	6
Reichel	2.55	11-8	29	20	8	3/2	1	123.1	123	56	45	43	83	14	2	7	488	.252	7	0	1	1	15

Totals 2.13 28-21 49 49 26 9/2 2 329.0 331 160 100 107 178 36 4 18 1310 .253 17 8 1 3 40

Opps. 4.04 21-28 49 49 36 7/1 3 324.0 408 228 187 85 170 59 12 22 1326 .308 20 12 1 4 73

PB - Team (7), Blaufuss 7, Opp (17). Pickoffs - Team (3), Blaufuss 3. SBA/ATT - Blaufuss (22-30), Heiman (13-17), Reichel (7-10), Erickson (2-4), Clouse (0-1).

Inning-by-inning summary:

	1	2	3	4	5	6	7	8	9	EX	Total
Washburn	36	17	50	34	30	39	17	7	1	1	232
Opponents	31	28	17	25	20	29	8	6	0	0	164

Win-loss summary:

	W	L	T	Pct
Total	28	21	0	.571
Conference	8	10	0	.444
Non-Conf	20	11	0	.645
Home	15	4	0	.789
Away	3	8	0	.273
Neutral	10	9	0	.526
Day	27	19	0	.587
Nite	1	2	0	.333
1-Run games	4	3	0	.571
2-Run games	7	4	0	.636
5+Run games	13	3	0	.812
Extra inns	1	3	0	.250
Shutouts	9	7	0	.562

General summary:

Current losing streak 2
 Longest winning streak 6
 Longest losing streak 8

 Home attendance 2201 (19 dates avg = 115)
 Away attendance 1774 (30 dates avg = 59)
 Total attendance: 3975 (49 dates avg = 81)

2001 Game by Game

!Feb 23	vs Southwest Baptist	W 5-1	5-9-2/1-9-0	7	Reichel (W 1-0)	50	1:20
!Feb 23	vs Henderson State	W 9-6	9-13-1/6-7-3	7	Heiman (W 1-0)	50	1:40
Mar 06	Bethany	W 13-0	13-12-0/0-2-6	5	Erickson (W 1-0)	68	1:22
Mar 06	Bethany	W 8-0	8-8-2/0-1-1	5	Reichel (W 2-0)	75	0:59
@Mar 09	vs Northwest Missouri	W 4-2	4-7-1/2-9-17	5	Heiman (W 2-0)	50	1:30
@Mar 09	vs Central Arkansas	L 1-6	1-3-3/6-11-0	7	Erickson (L 1-1)	35	1:15
@Mar 09	vs Central Oklahoma	W 7-5	7-9-0/5-9-3	7	Heiman (W 3-0)	50	1:40
@Mar 09	vs Pittsburg State	L 2-5	2-3-2/5-7-3	7	Heiman (L 3-1)	50	1:45
@Mar 10	vs Central Oklahoma	L 6-9	6-11-6/9-14-1	7	Heiman (L 3-2)	50	1:45
Mar 14	at Fort Hays State	W 7-5	7-11-1/5-5-2	7	Heiman (W 4-2)	50	1:50
Mar 14	at Fort Hays State	W 3-1	3-9-3/1-4-2	7	Reichel (W 3-0)	50	2:15
&Mar 21	vs Arkansas-Monticello	W 6-4	6-12-1/4-13-2	7	Heiman (W 5-2)	35	1:05
&Mar 21	vs Arkansas-Monticello	L 0-3	0-0-1/3-7-1	7	Erickson (L 1-2)	25	1:00
&Mar 22	vs Grace College	W 10-0	10-11-0/0-1-1	5	Reichel (W 4-0)	35	1:15
&Mar 22	vs Central Arkansas	W 5-1	5-8-2/1-5-0	7	Heiman (W 6-2)	35	1:15
&Mar 23	vs Emporia State	L 3-7	3-8-1/7-5-0	7	Heiman (L 6-3)	35	1:25
*Mar 27	at Pittsburg State	L 2-3	2-6-3/3-9-0	(8)	Heiman (L 6-4)	50	2:09
*Mar 27	at Pittsburg State	L 5-7	5-10-6/7-7-1	7	Heiman (L 6-5)	50	2:08
Mar 30	Southwest State	W 15-0	15-14-1/0-4-15	7	Reichel (W 5-0)	85	1:27
Mar 30	Southwest State	W 10-2	10-12-0/2-1-15	7	Erickson (W 2-2)	85	0:59
#Mar 31	vs Augustana	L 4-5	4-14-2/5-7-3	(11)	Reichel (L 5-1)	35	1:50
#Mar 31	vs North Dakota	W 3-0	3-9-1/0-4-0	7	Erickson (W 3-2)	45	1:20
#Mar 31	at Nebraska-Omaha	L 0-4	0-3-2/4-4-0	7	Heiman (L 6-6)	78	1:25
#Mar 31	vs South Dakota State	W 7-1	7-8-0/1-9-2	7	Erickson (W 4-2)	45	1:15
#Apr 01	vs North Dakota State	L 2-6	2-9-0/6-8-0	7	Reichel (L 5-2)	50	1:40
*Apr 05	Missouri Southern	L 0-2	0-4-0/2-5-0	7	Reichel (L 5-3)	95	1:25
*Apr 05	Missouri Southern	L 0-5	0-1-2/5-8-1	7	Erickson (L 4-3)	105	1:46
*Apr 06	at Central Missouri	L 4-6	4-6-2/6-7-3	7	Reichel (L 5-4)	40	1:25
*Apr 06	at Central Missouri	L 0-4	0-4-3/4-8-0	7	Heiman (L 6-7)	45	1:30
*Apr 07	at Truman State	L 0-7	0-6-5/7-10-2	7	Heiman (L 6-8)	95	1:45
*Apr 07	at Truman State	L 3-7	3-7-0/7-11-2	7	Reichel (L 5-5)	80	2:00
Apr 12	Kansas	L 0-3	0-7-1/3-5-0	7	Reichel (L 5-6)	165	1:52
*Apr 17	Emporia State	W 3-1	3-7-0/1-7-1	7	Heiman (W 7-8)	185	1:48
*Apr 17	Emporia State	W 3-2	3-7-1/2-6-1	7	Reichel (W 6-6)	125	1:55
*Apr 18	Missouri Western	W 9-4	9-15-3/4-10-4	7	Heiman (W 8-8)	87	2:02
*Apr 18	Missouri Western	W 8-0	8-8-2/0-2-1	5	Erickson (W 5-3)	75	1:34
*Apr 20	Missouri-Rolla	W 4-3	4-9-1/3-5-4	7	Reichel (W 7-6)	105	1:38
*Apr 20	Missouri-Rolla	W 5-4	5-9-3/4-6-0	7	Reichel (W 8-6)	120	1:49
*Apr 21	Southwest Baptist	L 3-4	3-10-1/4-8-0	7	Heiman (L 8-9)	110	1:55
*Apr 21	Southwest Baptist	W 8-1	8-14-0/1-9-2	7	Reichel (W 9-6)	140	1:45
*Apr 24	at Northwest Missouri	W 2-0	2-5-0/0-5-0	(8)	Heiman (W 9-9)	97	1:19
*Apr 24	at Northwest Missouri	L 2-5	2-8-2/5-12-1	7	Reichel (L 9-7)	75	1:40
Apr 25	Fort Hays State	W 9-3	9-12-1/3-5-3	7	Heiman (W 10-9)	105	1:28
Apr 25	Fort Hays State	W 6-0	6-9-0/0-3-1	7	Reichel (W 10-7)	111	1:50
Apr 29	Newman	W 5-0	5-11-1/0-6-3	7	Heiman (W 11-9)	185	1:31
Apr 29	Newman	W 7-2	7-9-2/2-3-2	7	Reichel (W 11-7)	175	1:24
^Apr 04	vs Central Missouri	W 2-1	2-4-0/1-4-0	7	Heiman (W 12-9)	154	1:20
^May 04	vs Truman State	L 3-6	3-7-0/6-13-2	(10)	Reichel (L 11-8)	150	2:20
^May 05	vs Missouri-Rolla	L 5-7	5-10-1/7-11-2	7	Heiman (L 12-10)	85	1:55

! = Central Arkansas Tournament - Conway, Ark.

@ = Missouri Southern Invitational - Joplin, Mo.

& = West Florida Spring Fling - Pensacola, Fla.

= Nebraska-Omaha Invitational - Omaha, Neb.

* = MIAA Game

^ = MIAA Championship Tournament - Shawnee, Kan.

() extra inning game

Season Softball Awards

Commerce Bank MVP

Stacie Carpenter

NCAA All-North Central Region First Team

Kristen Cheney

All-MIAA First Team

Stacie Carpenter, Kristen Cheney

All-MIAA Second Team

Brooke Lyons

All-MIAA Honorable Mention

Amy Scott, Julie Blaufuss

All-MIAA Commissioner's Academic Honor Roll

Sandy Erickson, Amy Heiman, Dawn Nachbar and

Amy Scott

Lady Blues Senior Award

Stacie Carpenter, Amy Heiman, Amy Scott



Stacie Carpenter
*Commerce Bank MVP
First Team all-MIAA*



Kristen Cheney
*First Team all-MIAA,
North Central
all-Region Team*



Brooke Lyons
Second Team all-MIAA



Stacie Carpenter played in 196 games as a member of the Lady Blues. As a sophomore, Stacie tied a Washburn record playing in 65 games receiving MIAA honorable mention accolades. As a junior, she was named First Team all-MIAA after hitting .375. She was also named Second Team all-South Central Region. For her career, Stacie was the all-time leader in doubles. She is fifth in base hits, fifth in triples, third in RBI, fourth in runs scored and fourth in career batting average.

2001 In Review

Lady Blues Highs

Batting:

At bats:

46 - vs Augustana (Mar 31)

Runs scored:

15 - vs Southwest State (Mar 30)

Hits:

15 - vs Missouri Western (Apr 18)

RBIs:

13 - vs Southwest State (Mar 30)

Doubles:

4 - vs Southwest State (Mar 30)

4 - vs Missouri Western (Apr 18)

4 - vs Missouri-Rolla (Apr 20)

Triples:

3 - vs South Dakota State (Mar 31)

Home runs:

2 - (6 games)

Total bases:

20 - (4 games)

Walks:

5 - vs Emporia State (Mar 23)

5 - vs Fort Hays State (Apr 25)

Strikeouts:

11 - vs Arkansas-Monticello (Mar 21)

Sac hits:

4 - vs Arkansas-Monticello (Mar 21)

4 - vs Missouri-Rolla (Apr 20)

4 - vs Northwest Missouri (Apr 24)

Sac flies:

1 - (4 games)

Stolen bases:

7 - vs Emporia State (Mar 23)

Hit by pitch:

2 - vs Central Oklahoma (Mar 09)

2 - vs Nebraska-Omaha (Mar 31)

2 - vs Emporia State (Apr 17)

Caught stealing:

2 - vs Southwest State (Mar 30)

Runners LOB:

17 - vs Augustana (Mar 31)

Hit into DP:

2 - (4 games)

Pitching:

Innings pitched:

10.2 - vs Augustana (Mar 31)

Strikeouts:

10 - vs Augustana (Mar 31)

Hits allowed:

1 - vs Bethany (Mar 06)

1 - vs Grace College (Mar 22)

1 - vs Southwest State (Mar 30)

Wild pitches:

4 - vs Missouri-Rolla (Apr 20)

Hit batters:

2 - vs Missouri Southern (Apr 05)

2 - vs Central Missouri (Apr 06)

Individual Highs

Batting:

At bats:

6 - (4 games)

Runs scored:

3 - (4 games)

Hits:

5 - Julie Blaufuss vs Augustana (Mar 31)

RBIs:

5 - Kristen Cheney vs Newman (Apr 29)

Doubles:

2 - Katie Schmidt vs Truman State (Apr 07)

2 - Amy Scott vs Missouri Western (Apr 18)

2 - Stacie Carpenter vs Southwest Baptist (Apr 21)

Triples:

1 - (12 games)

Home runs:

1 - (22 games)

Total bases:

7 - Stacie Carpenter vs Missouri Western (Apr 18)

7 - Kristen Cheney vs Fort Hays State (Apr 25)

Walks:

2 - (6 games)

Strikeouts:

4 - Holly Reichel vs Augustana (Mar 31)

Sac hits:

3 - Brooke Lyons vs Northwest Missouri (Apr 24)

Sac flies:

1 - (4 games)

Stolen bases:

3 - Brooke Lyons vs Emporia State (Mar 23)

Hit by pitch:

1 - (12 games)

Caught stealing:

1 - (5 games)

Runners LOB:

10 - Katie Schmidt vs Augustana (Mar 31)

Fielding

Putouts:

13 - Stacie Carpenter vs Newman (Apr 29)

Assists:

8 - Katie Schmidt vs Newman (Apr 29)

Errors:

4 - Dara Clouse vs Pittsburg State (Mar 27)

Passed balls:

2 - Julie Blaufuss vs Emporia State (Mar 23)

Pitching:

Innings pitched:

10.2 - Holly Reichel vs Augustana (Mar 31)

Strikeouts:

10 - Holly Reichel vs Augustana (Mar 31)

Wild pitches:

4 - Amy Heiman vs Missouri-Rolla (Apr 20)

Hit batters:

2 - Amy Heiman vs Missouri Southern (Apr 05)

2 - Amy Heiman vs Central Missouri (Apr 06)

About the MIAA

The Mid-America Intercollegiate Athletics Association, a 10-member conference of NCAA Division II institutions in Missouri and Kansas, was first organized in 1912 as the Missouri Intercollegiate Athletic Association.

Over the past 15 years, the league has undergone several changes, highlighted by expansion and increased participation in national championships.

The MIAA has gained the reputation of being one of the top NCAA Division II conferences in the nation. MIAA student-athletes have won nine national championships and more than 98 individual national titles.

The MIAA currently conducts conference championships in nine men's and seven women's sports.

Men's champions are crowned in football, cross country, basketball, indoor and outdoor track and field, baseball, tennis, and golf. Women's champions are determined in volleyball, cross country, basketball, indoor and outdoor track and field, soccer, softball and tennis.

Ralph McFillen was named to succeed Ken B. Jones as commissioner of the MIAA in January 1997 and took over in July of that year. He formerly served as commissioner of the Metro and Gulf South conferences.

Matt Newbery, formerly an assistant sports information director at Pittsburg State University, joined the conference in July 1994 as director of sports information.

MIAA Members

Central Missouri State University
Warrensburg, Mo.

Emporia State University
Emporia, Kan.

University of Missouri-Rolla
Rolla, Mo.

Missouri Southern State College
Joplin, Mo.

Missouri Western State College
St. Joseph, Mo.

Northwest Missouri State University
Maryville, Mo.

Pittsburg State University
Pittsburg, Kan.

Southwest Baptist University
Bolivar, Mo.

Truman State University
Kirksville, Mo.

Washburn University
Topeka, Kan.

Past MIAA Softball Champs

Central Missouri: 1982, 1988, 1994, 1995, 1997

Missouri Southern: 1990, 1992, 1993, 1998, 2001

Northwest Missouri: 1984, 1999

Truman State: 1983, 1985, 1986, 2000

Missouri-St. Louis: 1989

Southeast Missouri State University: 1991



Ralph McFillen

MIAA Commissioner



Matt Newbery

*MIAA Sports
Information Director*

MIAA Directory

10551 Barkley,
Suite 501
Overland Park,
KS 66212

913.341.3839

McFillen Phone

913.341.5887

McFillen Fax

913.341.3080

Newbery Phone

913.341.2995

Newbery Fax

2001 MIAA In Review

	MIAA				Overall			
	W	L	T	Pct.	W	L	T	Pct.
x-Missouri Southern (17)	17	1	0	.944	52	12	0	.813
Truman (19)	13	4	0	.765	43	11	1	.791
Central Missouri	11	7	0	.611	36	22	0	.621
Northwest Missouri	10	7	0	.588	21	23	0	.477
Pittsburg State	9	9	0	.500	25	26	0	.490
Washburn	8	10	0	.444	28	21	0	.571
Emporia State	6	12	0	.333	20	24	0	.455
Missouri-Rolla	6	12	0	.333	23	33	0	.411
Southwest Baptist	5	13	0	.278	14	39	0	.264
Missouri Western	4	14	0	.222	11	29	0	.275

x=MIAA regular season & tournament champion
 NFCA Division II Poll ranking in parenthesis.

2001 MIAA All-Conference Teams

Most Valuable Player:

Britany Hargis, P, MSSC

Freshman of the Year:

Elizabeth Economon, SS, TSU

Coaches of the Year:

Ron Faubion, MSSC

First Team

Britany Hargis, MSSC, P, 5-6, Sr., Broken Arrow, Okla.
 Jennifer Hulsopple, TSU, P, 5-11, Jr., Peculiar, Mo.
 Kristi Bredbenner, TSU, C, 5-6, Sr., O'Fallon, Mo.
Stacie Carpenter, WU, 1B, 5-8, Sr., Clay Center, Kan.
 Lisa Roe, MSSC, 2B, 5-5, So., Lenexa, Kan.
 Erin Turner, MSSC, SS, 5-7, Jr., Harrisonville, Mo.
 Jill Gregory, SBU, 3B, 5-6, So., Ozark, Mo.
 Hailey Stanley, MSSC, UT, 5-5, Jr., Webb City, Mo.
 Kelly Carter, NWMSU, OF, 5-4, So, Excelsior Springs, Mo.
Kristen Cheney, WU, OF, 5-7, Jr., Wichita, Kan.
 Desirée Price, CMSU, OF, 5-8, Fr., Olathe, Kan.
 Noelle Casas, CMSU, DP, 5-4, Jr., Lee's Summit, Mo.

Second Team

Brooke Davidson, PSU, P, 6-0, Sr., Bucyrus, Kan.
 Keri Harris, MSSC, P, 5-5, Jr., Grove, Okla.
 Megan Beattie, ESU, C, 5-8, So., Olathe, Kan.
 Trina Denison, MWSC, 1B, 5-6, Sr., Arvada, Colo.
 Lindy Tomlinson, NWMSU, 2B, 5-7, Jr., Raytown, Mo.
 Bridget Keating, PSU, SS, 5-9, Sr., Fort Scott, Kan.
 Shasta Stanwix, PSU, 3B, 5-7, So., Grantville, Kan.
 Lory Mothersbaugh, CMSU, UT, 5-5, Jr., Unionville, Mo.
 Jana Allison, MSSC, OF, 5-4, So., Lebanon, Mo.
 Molly Balke, UMR, OF, 5-4, Fr., High Ridge, Mo.
 Stephanie Cepicky, TSU, OF, 5-5, Fr., St. Louis, Mo.
Brooke Lyons, WU, OF, 5-5, So., Topeka, Kan.
 Andrea Haines, SBU, DP, 5-8, Sr., Wichita, Kan.
 Bonnie Jones, ESU, DP, 5-10, Sr., Bixby, Okla.
 Four outfielders and two designated players were selected because of ties in the voting.

Honorable Mention

Pitcher: Elisha Bonnot, MSSC, P 5-8 Sr., Loose Creek, Mo., Gwen Giffin, CMSU, P, 5-8, Sr., Antigonish, Nova Scotia, Canada, Janis McKay, SBU P, 5-3, Jr., Waterdown, Conn., Stephanie Miller, ESU, P, 5-5, So., Derby, Kan., Breanna Wonderly, TSU, P, 5-5, Fr., Conception, Mo.
Catcher: Paula Baker, MSSC, C, 5-10, Jr., Claremore, Okla., **Julie Blaufuss, WU, C, 5-10, So., Lenexa, Kan.**
1st Base: Nicole Strawn, NWMSU, 1B, 5-9, Sr., Independence, Mo., Sarah Patterson, SBU, 1B, 5-7, Sr., Raytown, Mo.
2nd Base: Sissy Fletcher, CMSU, 2B, 5-3, So., DeSoto, Kan., Rachel Helsler, UMR, 2B, 5-5, Jr., Belfair, Wash.
Shortstop: Elizabeth Economon, TSU, SS, 5-3, Fr., St. Louis, Mo., Kassie Long, CMSU, SS, 5-8, Fr., Carrollton, Mo., Alison Pottorf, ESU, SS, 5-0, Jr., Topeka, Kan.
3rd Base: Missy Kane, TSU, 3B, 5-7, Sr., Wildwood, Mo., Kami Weston, MSSC, 3B, 5-5, So., Baxter Springs, Kan.
Utility: Mandy Frasco, PSU, UT, 5-5, Jr., Wichita, Kan.
Outfield: Jan Farwell, ESU, OF, 5-7, So., Bern, Kan., Katy Mueller, TSU, OF, 5-3, Fr., St. Louis, Mo., **Amy Scott, WU, OF, 5-4, Sr., Topeka, Kan.**, Shannon Stoughton, ESU, OF, 5-11, Fr., Parker, Kan.

2001 MIAA In Review

Batting	G	AB	H	RBI	2B	3B	HR	Avg.
WU	49	1326	408	199	59	12	22	.308
TSU	55	1514	429	215	62	11	19	.283
MSSC	64	1634	462	211	73	11	16	.283
CMSU	58	1539	431	172	69	22	9	.280
UMR	56	1475	389	147	75	12	7	.264
NWMSU	44	1216	320	129	64	5	12	.263
SBU	52	1406	353	95	56	1	7	.251
MWSC	40	1035	259	77	33	3	4	.250
ESU	44	1111	269	131	46	4	13	.242
PSU	51	1407	338	107	39	4	5	.240

Pitching	G	IP	H	R	ER	BB	SO	HB	ERA
MSSC	64	445.0	290	89	55	91	357	10	0.87
TSU	55	391.0	281	81	59	79	212	9	1.06
CMSU	58	393.3	371	160	94	84	168	10	1.67
PSU	51	360.3	316	162	106	108	245	2	2.06
NWMSU	44	303.0	313	146	92	93	119	10	2.13
WU	49	329.0	331	160	100	107	178	8	2.13
SBU	52	359.0	413	189	123	55	167	12	2.40
MWSC	40	259.3	296	169	94	88	83	9	2.54
ESU	44	286.3	313	156	106	91	187	13	2.59
UMR	56	366.3	436	255	146	81	172	26	2.79

Fielding	G	PO	A	E	DP	Pct.
TSU	55	1171	646	58	19	.969
MSSC	64	1331	596	65	21	.967
NWMSU	44	909	458	59	17	.959
WU	49	987	481	72	14	.953
CMSU	58	1178	624	93	19	.951
PSU	51	1081	404	82	14	.948
MWSC	40	778	472	72	6	.946
SBU	52	1077	536	94	10	.945
ESU	44	859	398	75	8	.944
UMR	56	1099	528	126	14	.928

Scoring	G	R	Avg.
WU	49	228	4.65
TSU	55	235	4.27
MSSC	64	249	3.89
CMSU	58	219	3.78
ESU	44	156	3.55
UMR	56	190	3.39
NWMSU	44	147	3.34
PSU	51	146	2.86
MWSC	40	100	2.50
SBU	52	121	2.33

Batting (min. 2.0 AB/G)	G	AB	H	Avg.
1. Denison, Trina Sr MWSC	40	123	51	.415
2. Lyons, Brooke So WU	46	122	48	.393
3. Cheney, Kristen Jr WU	48	161	63	.391
4. Economon, Elizabeth Fr TSU	55	180	70	.389
5. Bredbenner, Kristi Sr TSU	55	163	63	.387
6. Turner, Erin Jr MSSC	64	213	82	.385
7. Carpenter, Stacie Sr WU	48	146	54	.370
8. Greenwell, Sabrina Sr UMR	55	162	59	.364
9. Price, Desirée Fr CMSU	58	181	65	.359
10. Strawn, Nichole Sr NWMSU	44	148	51	.345

11. Blaufuss, Julie So WU	49	154	53	.344
12. Gregory, Jill So SBU	52	157	54	.344
13. Keating, Bridgett Sr PSU	51	165	56	.339
14. Borgmeyer, Janet Fr UMR	53	168	56	.333
15. Roe, Lisa So MSSC	64	169	56	.331

Slugging Pct. (min. 2.0 AB/G)	G	AB	TB	Slg%
1. Economon, Elizabeth Fr TSU	55	180	115	.639
2. Beattie, Megan So ESU	44	136	83	.610
3. Carpenter, Stacie Sr WU	48	146	89	.610
4. Bredbenner, Kristi Sr TSU	55	163	99	.607
5. Greenwell, Sabrina Sr UMR	55	162	89	.549
6. Lyons, Brooke So WU	46	122	66	.541
7. Cheney, Kristen Jr WU	48	161	87	.540
8. Denison, Trina Sr MWSC	40	123	65	.528
9. Turner, Erin Jr MSSC	64	213	112	.526
10. Baker, Paula Jr MSSC	64	183	94	.514
11. Strawn, Nichole Sr NWMSU	44	148	74	.500
12. Price, Desirée Fr CMSU	58	181	90	.497
13. Schmidt, Katie Fr WU	49	136	64	.471
14. Gregory, Jill So SBU	52	157	73	.465
15. Long, Kassie Fr CMSU	58	177	82	.463

On Base Pct. (min. 2.4 PA/G)	G	PA	OB	OB%
1. Bredbenner, Kristi Sr TSU	55	196	95	.485
2. Economon, Elizabeth Fr TSU	55	199	88	.442
3. Denison, Trina Sr MWSC	40	129	57	.442
4. Turner, Erin Jr MSSC	64	234	103	.440
5. Cheney, Kristen Jr WU	48	175	77	.440
6. Lyons, Brooke So WU	46	132	58	.439
7. Gregory, Jill So SBU	52	183	80	.437
8. Carpenter, Stacie Sr WU	48	165	71	.430
9. Greenwell, Sabrina Sr UMR	55	176	73	.415
10. Baker, Paula Jr MSSC	64	217	90	.415

Doubles	G	2B	Avg
1. Economon, Elizabeth Fr TSU	55	21	.382
2. Greenwell, Sabrina Sr UMR	55	19	.345
3. Price, Desirée Fr CMSU	58	19	.328
4. McCoy, Angie Fr NWMSU	42	13	.310
5. Carpenter, Stacie Sr WU	48	14	.292
6. Strawn, Nichole Sr NWMSU	44	12	.273
7. Gregory, Jill So SBU	52	14	.269
8. Baker, Paula Jr MSSC	64	16	.250
Denison, Trina Sr MWSC	40	10	.250
10. Martin, Kasey Jr MSSC	64	15	.234

Triples	G	3B	Avg
1. Shaw, Emmie Fr CMSU	55	8	.145
2. Balke, Molly Fr UMR	56	7	.125
3. Economon, Elizabeth Fr TSU	55	6	.109
4. Lyons, Brooke So WU	46	4	.087
5. Beattie, Megan So ESU	44	3	.068
6. Carpenter, Stacie Sr WU	48	3	.062
7. Blackburn, Beth So CMSU	58	3	.052
Long, Kassie Fr CMSU	58	3	.052
9. Denison, Trina Sr MWSC	40	2	.050
Manthe, Kriston Fr NWMSU	40	2	.050

2001 MIAA In Review

Home Runs

	G	HR	Avg
1. Beattie, Megan So ESU	44	8	.182
2. Bredbenner, Kristi Sr TSU	55	8	.145
3. Schmidt, Katie Fr WU	49	6	.122
4. Tomlinson, Lindy Sr NWMSU	44	5	.114
5. Baker, Paula Jr MSSC	64	7	.109
6. Carpenter, Stacie Sr WU	48	5	.104
7. Blaufuss, Julie JR WU	49	5	.102
8. Sexton, Mary Kate Fr MWSC	32	3	.094
9. Cheney, Kristen Jr WU	48	4	.083
10. Turner, Erin Jr MSSC	64	5	.078

Runs Batted In

	G	RBI	Avg
1. Bredbenner, Kristi Sr TSU	55	47	.85
2. Carpenter, Stacie Sr WU	48	37	.77
3. Beattie, Megan So ESU	44	33	.75
4. Cheney, Kristen Jr WU	48	33	.69
5. Economon, Elizabeth Fr TSU	55	36	.65
6. Baker, Paula Jr MSSC	64	40	.62
7. Strawn, Nichole Sr NWMSU	44	26	.59
8. Greenwell, Sabrina Sr UMR	55	32	.58
9. Martin, Shera Sr PSU	42	24	.57
10. Tomlinson, Lindy Sr NWMSU	44	25	.57

Runs Scored

	G	R	Avg
1. Economon, Elizabeth Fr TSU	55	47	.85
2. Cheney, Kristen Jr WU	48	41	.85
3. Carpenter, Stacie Sr WU	48	33	.69
4. Turner, Erin Jr MSSC	64	42	.66
5. Balke, Molly Fr UMR	56	34	.61
6. Pottorf, Allison Jr ESU	43	26	.60
7. Fletcher, Sissy So CMSU	58	33	.57
8. Beattie, Megan So ESU	44	25	.57
9. Mothersbaugh, Lory Jr CMSU	58	32	.55
10. Carter, Kelly So NWMSU	44	24	.55
Tomlinson, Lindy Sr NWMSU	44	24	.55

Stolen Bases

	G	SBSBA	Pct	Avg
1. Turner, Erin Jr MSSC	64	47	59	79.7 .73
2. Williams, Mary Sr PSU	50	23	24	95.8 .46
3. Pottorf, Allison Jr ESU	43	15	18	83.3 .35
4. Kremer, Carol Sr PSU	51	17	20	85.0 .33
5. Borlase, Sherri Sr SBU	50	16	19	84.2 .32
6. Keating, Bridgett Sr PSU	51	16	19	84.2 .31
7. Cheney, Kristen Jr WU	48	15	16	93.8 .31
8. Beattie, Megan So ESU	44	12	14	85.7 .27
9. Mothersbaugh, Lory Jr CMSU	58	15	15	100.0 .26
10. Stanley, Hailey Jr MSSC	64	16	22	72.7 .25
Rapp, Darcey Jr UMR	56	14	18	77.8 .25

VICTORIES

	G	IP	W	L	Pct
1. Hulsopple, Jennifer Jr TSU	32	197.3	23	7	.767
2. Harris, Keri Jr MSSC	29	159.7	19	5	.792
Giffin, Gwen Sr CMSU	33	202.0	19	9	.679
4. Hargis, Britany Sr MSSC	39	149.0	18	4	.818
5. Wonderly, Breanna Fr TSU	24	137.7	14	4	.778
6. Adkins, Alison Jr NWMSU	21	110.3	12	4	.750
Davidson, Brooke Sr PSU	26	160.3	12	9	.571
Heiman, Amy Sr WU	30	158.0	12	10	.545

9. Weingartner, Amanda Jr UMR	26	135.7	12	10	.545
10. Mothersbaugh, Lory Jr CMSU	23	126.3	11	7	.611
Reichel, Holly Fr WU	29	123.3	11	8	.579

SAVES

	G	IP	ERA	Sv
1. Hargis, Britany Sr MSSC	39	149.0	0.89	10
2. Mothersbaugh, Lory Jr CMSU	23	126.3	1.61	3
3. Stanley, Hailey Jr MSSC	12	46.7	0.90	2
Bonnot, Elisha Sr MSSC	19	86.7	0.89	2
Davidson, Brooke Sr PSU	26	160.3	1.48	2
Weingartner, Amanda Jr UMR	26	135.7	2.43	2

Earned Run Average

	G	IP	R	ER	ERA
1. Buford, Britni So TSU	7	56.0	9	6	0.75
2. Harris, Keri Jr MSSC	29	159.7	29	19	0.83
3. Bonnot, Elisha Sr MSSC	19	86.7	20	11	0.89
4. Hargis, Britany Sr MSSC	39	149.0	27	19	0.89
5. Hulsopple, Jennifer Jr TSU	32	197.3	36	27	0.96
6. Wonderly, Breanna Fr TSU	24	137.7	36	26	1.32
7. Davidson, Brooke Sr PSU	26	160.3	56	34	1.48
8. Giffin, Gwen Sr CMSU	33	202.0	74	44	1.52
9. Mothersbaugh, Lory Jr CMSU	23	126.3	52	29	1.61
10. McGinnis, Morgan Fr NWMSU	26	156.3	69	38	1.70

STRIKEOUTS PER 7 IP

	G	IP	K	K/7IP
1. Hargis, Britany Sr MSSC	39	149.0	167	7.85
2. Davidson, Brooke Sr PSU	26	160.3	166	7.25
3. Miller, Stephanie So ESU	19	116.3	104	6.26
4. Reichel, Holly Fr WU	29	123.3	83	4.71
5. Harris, Keri Jr MSSC	29	159.7	103	4.52
6. Fletcher, Stacey So UMR	18	85.0	51	4.20
7. Bonnot, Elisha Sr MSSC	19	86.7	51	4.12
8. McKay, Janis Jr SBU	22	146.7	85	4.06
9. Wonderly, Breanna Fr TSU	24	137.7	75	3.81
10. Hulsopple, Jennifer Jr TSU	32	197.3	107	3.80

WALKS PER 7 IP

	G	IP	BB	BB/7IP
1. McKay, Janis Jr SBU	22	146.7	12	0.57
2. Elsasser, Kara So ESU	21	95.7	11	0.80
3. Bonnot, Elisha Sr MSSC	19	86.7	10	0.81
4. Buford, Britni So TSU	7	56.0	7	0.88
5. Weingartner, Amanda Jr UMR	26	135.7	19	0.98
6. Giffin, Gwen Sr CMSU	33	202.0	31	1.07
7. Fletcher, Stacey So UMR	18	85.0	17	1.40
8. Hanies, Andrea Sr SBU	33	199.3	41	1.44
9. Hulsopple, Jennifer Jr TSU	32	197.3	41	1.45
10. Wonderly, Breanna Fr TSU	24	137.7	31	1.58



Washburn History



Laura Klamm was inducted into the Washburn Athletics Hall of Fame on Feb. 14, 1998.

Klamm was a three-time NAIA All-American in softball and a member of the

NAIA Hall of Fame.

She had an all-time pitching record of 79-27 and led the Lady Blues to two NAIA national tournament appearances in 1985 and 1986. Klamm was named the NAIA tournament most valuable player in 1985 and was also selected to the all-tournament team as a senior in 1986.

In addition to her off-field accomplishments, she was a NAIA Academic All-American in 1986. Her jersey number "17" was retired following the 1986 season.

Washburn finished as the national runner-up in 1985 and was fifth in 1986.



Laura Klamm was a three-time NAIA All-America selection in softball and named to the NAIA Softball Hall of Fame.

Lady Blues in Postseason Play



1999



DISTRICT 10 CHAMPIONS

1990

1989

1988

1987

1986



TOURNAMENT APPEARANCES

2001	1997	1993
2000	1996	1992
1999	1995	1991
1998	1994	

Lady Blues MVP

1991 Jo WodtkeSR, OF
1992 Jodee JensonSR, C
1993 Jenny Klamm . . .SR, OF
1994 Chris TorrezSO, OF
1995 Chris TorrezJR, OF
1996 Chris TorrezSR, OF
1997 Elizabeth Anthony .SR, P
1998 Joy Marie Soerries .SR, SS
1999 Torrie Beauchamp .SR, OF
2000 Carrie Kaberline .SR, SS
2001 Stacie Carpenter .SR, 1B

MIAA Most Valuable Player

Jenny Klamm, OF1993

All-MIAA First Team

Stacie Carpenter, 1B.2001
Kristen Cheney, OF.2001
Hayle Beauchamp, OF.2000
Stacie Carpenter, 1B2000
Carrie Kaberline, SS2000
Kathy Mohler, P2000
Marcy Scott, 2B1999
Kathy Mohler, UT1999
Torrie Beauchamp, OF1999
Kathy Mohler, UT1998
Torrie Beauchamp, OF1998
Carrie Kaberline, UT1997
Torrie Beauchamp, OF1997
Chris Torrez, OF.1996
Chris Torrez, OF.1995
Chris Torrez, OF.1994
Shannon Rhodes, P.1993
Brandi Steinmetz, SS.1993
Jenny Klamm, OF1993
Jenny Klamm, 2B1992
Shelly Burke, DP1991
Jo Wodtke, OF.1991

All-MIAA Second Team

Brooke Lyons, OF2001
Dawn Nachbar, 2B.2000
Amy Heiman, P.1999
Marcy Scott, 2B1998
Joy Marie Soerries, SS1998
Shelley Cole, OF1998
Joy Marie Soerries, SS. . . .1997
Angie Guerin, OF1997

Tara Phillips, 1B1996
Marcy Scott, 2B1996
Tara Phillips, 1B1995
Angie Guerin, OF1994
Shelly (Burke) DeHart, 3B. 1993
Chris Torrez, OF.1993
Tara Phillips, DP1993
Shannon Rhodes, P.1992
Jodee Jenson, C1992
Jodee Jenson, C.1991
Jenny Klamm, 2B1991
Deniece Hansen, 3B.1991

All-MIAA Honorable Mention Team

Amy Scott, OF.2001
Julie Blaufuss, C2001
Stacie Carpenter, 1B. . . .1999
Carrie Kaberline, SS1999
Carrie Kaberline, 1B1998
Stacie Carpenter, DP1998
Amy Heiman, P.1998
Kathy Mohler, P1997
Marcy Scott, 2B1997
Shelley Cole, DP1997
Tammy Sauer, P1996
Joy Marie Soerries, SS. . . .1996
Torrie Beauchamp, OF1996
Angie Guerin, OF1996
Chris Kline, DP1996
Mendy Simecka, C1995
Chris Kline, 2B1995
Renee Harders, SS1995
Angie Guerin, OF1995
Mendy Simecka, C1994
Kelley Jordan, 1B1994
Shannon Rhodes, P.1991
Rhonda Rouck, P.1991

MIAA All-North Division Team

Shannon Rhodes, P.1993
Rhonda Rouch, P1993
Brandi Steinmetz, SS.1993
Shelly DeHart, 3B.1993
Jenny Klamm, OF1993
Chris Torrez, OF.1993
Tara Phillips, DP1993
Shannon Rhodes, P.1992
Jodee Jenson, C1992

Jenny Klamm, 2B1992
Diana Paul, OF1992
Rhonda Rouck, P.1991
Jodee Jenson, C.1991
Deniece Hanson, 3B1991
Jo Wodtke, OF.1991
Shelly Burke, DP1991

Second Team All-Midwest Region

Jenny Klamm, 2B1991
Jo Wodtke, OF.1991
Shelly Burke, DP1991

MIAA Commissioner's Academic Honor Roll

Sandy Erickson, P2001
Amy Heiman, P.2001
Dawn Nachbar, 2B.2001
Amy Scott, OF.2001
Kristen Cheney, OF.2000
Haley Ford, OF2000
Amy Heiman, P2000
Carrie Kaberline, SS2000
Dawn Nachbar, 2B.2000
Amanda Purdon, UT.2000
Amy Scott, OF.2000
Tara Steffan, 3B2000
Amanda Vawter, C.2000
Torrie Beauchamp, OF1999
Haley Ford, OF1999
Tara Griffith, C1999
Amy Heiman, P.1999
Carrie Kaberline, SS1999
Amanda Vawter, C1999
Torrie Beauchamp, OF1998
Haley Ford, OF1998
Joy Marie Soerries, SS.1998
Lindsey Wagner, UT1998
Elizabeth Anthony, P/1B 1997
Torrie Beauchamp, OF1997
Stacey Davis, P1997
Joy Marie Soerries, SS.1997
Mendy Simecka, C1996
Tisha Wolf, OF1996
Renee Harders, SS1995
Mendy Simecka, C1995
Eileen Brungardt, IF1994
Chris Keller, IF.1994
Mendy Simecka, C1994

Washburn History

Jenny Klamm, OF 1993
Shannon Rhodes, P. 1993
Jenny Klamm, 2B 1992
Jenny Klamm, 2B 1991
Michelle Reed, P. 1991

NSCA Division II All-Region First Team

Kathy Mohler, UT 1999
Chris Torrez, OF. 1996
Chris Torrez, OF. 1995

NSCA Division II All-Region Second Team

Kristen Cheney, OF. 2001
Stacie Carpenter, 1B . . . 2000
Torrie Beauchamp, OF . . 1999
Tammy Sauer, P 1996
Chris Kline, 2B 1995

NSCA Division II All- America Third Team

Chris Torrez, OF. 1996

GTE/CoSIDA College Division Academic All-America Third Team

Torrie Beauchamp, OF . . 1999

GTE/CoSIDA College Division Academic All-District VII First Team

Torrie Beauchamp, OF . . 1999

GTE/CoSIDA College Division Academic All- District VII Second Team

Torrie Beauchamp, OF . . 1998
Elizabeth Anthony, P . . . 1997

All-MIAA All-Academic Team

Torrie Beauchamp, OF . . 1998
Amy Heiman, OF 1998

NAIA-All America First Team

Laura Klamm, P/SS 1986

Diana Klamm, P. 1986
Latisha Yarnell, 1B 1986
Laura Klamm, P/SS 1984

NAIA-All America Second Team

Laura Klamm, P/SS 1985

NAIA Academic All-America

Laura Klamm, P/SS 1986
Diana Klamm, P. 1986

NAIA National Tournament MVP

Laura Klamm, P/SS 1986
Laura Klamm, P/SS 1985

NAIA All-Tournament Team

Julie Michel, OF 1988
Nancy Mohler, C. 1988
Laura Klamm, P/SS 1986
Laura Klamm, P/SS 1985

NAIA All-District 10 First Team

Rhonda Rouch, P 1990
Sherri Spangler, IF. 1990
Jo Wodtke, OF. 1990
Vicki Fund, P. 1989
Jill Fischer, 3B. 1988
Vicki Fund, P. 1988
Latisha Yarnell, 1B 1988
Jill Fischer, 3B. 1987
Latisha Yarnell, 1B 1986
Diana Klamm, P. 1986
Laura Klamm, P/SS 1986
Lori Catron, 2B 1986
Latisha Yarnell, 1B 1985
Lori Catron, 2B 1985
Laura Klamm, P/SS 1985
Diana Klamm, P. 1985
Laura Klamm, P/SS 1984
Michele Sasek, C. 1984
Lori Catron, IF. 1984
Laura Klamm, 2B 1983
Brenda Soldani, 1B. 1983
Roxanne Hoffman 1983
Elaine Ehler, OF 1983

All-CSIC First Team

Jill Fischer, 3B. 1988
Jill Fischer, 3B. 1987
Laura Klamm, P/SS 1986
Diana Klamm, P. 1986
Diana Klamm, P/SS. . . . 1985
Laura Klamm, P/SS 1985
Latisha Yarnell, 1B 1985
Laura Klamm, P/SS 1984
Laura Klamm, P/SS 1983
Brenda Soldani, 1B. . . . 1983
Brenda DeGroot, OF. . . . 1979
Carol Williams, P 1979
Brenda Stolle, P 1978
Carol Williams, P 1978

Honorable Mention All-CSIC

Julie Michel, OF 1990
Vicki Fund, P. 1988
Nancy Mohler, C. 1988
Latisha Yarnell, 1B 1986
Lori Catron, 2B 1986
Lori Catron, 2B 1985
Lori Catron, 2B 1984
Kim Dickerson, OF 1984
Brenda Soldani, 3B. 1982
Lisa Balsters, 1B 1979
Bonnie Crow, 3B. 1979
Laura Broyles, OF 1978
Brenda DeGroot, OF. . . . 1978
Debbie McDougal, C . . . 1978
Lisa White-Balsters, 1B. . 1978

CSIC All-Academic

Laura Klamm, P/SS 1986
Laura Klamm, P/SS 1985
Laura Klamm, P/SS 1984
Laura Klamm, P/SS 1983

NAIA District 10 Coach of the Year

Kelly Stauffer 1990
Kelly Stauffer 1989
Kelly Stauffer 1988

CSIC All-Conference Tournament Team

Gina Bradford, C. 1980

Year by Year

Year	Coach	Record	Pct.	Year	Coach	Record	Pct.
1970	Nuzman	1-4	.200	1986	Moley	50-12	.806
1971	Nuzman	2-3	.200	1987	Moley	35-21	.745
1972	Floyd	3-2	.600	1988	Stauffer	31-18	.633
1973	Floyd	4-3	.571	1989	Stauffer	25-19	.568
1974	Floyd	3-3	.500	1990	Stauffer	38-10	.792
1975	McCool	7-3	.700	1991	Stauffer-Osburn	25-21	.543
1976	Bean	7-5	.583	1992	Osburn	26-23	.531
1977	Chipman	5-14	.263	1993	Osburn	33-9	.673
1978	Furrer	16-14	.533	1994	Osburn	22-32-1	.409
1979	Dick	14-13	.519	1995	Blaskowski	31-22	.585
1980	Dick	9-13	.409	1996	Blaskowski/Punzo	31-19	.620
1981	Dick	7-18	.280	1997	Newbern	27-21	.563
1982	Dick	10-20	.333	1998	Newbern	27-14	.659
1983	Moley	12-12	.500	1999	Newbern	41-24	.631
1984	Moley	26-9	.743	2000	Newbern	38-20	.655
1985	Moley	34-17	.667	2001	Newbern	28-21	.571

All-Time Record (32 seasons) – 709-471-1 (.601)

Annual Leaders

The following single-game, single-season and career records are based on games played since Washburn joined the NCAA Division II ranks and the MIAA during the 1989-90 academic year.

Batting Average

Year	Player	POS	AB	H	AVG
1984	Laura Klamm	P/SS	111	37	.360
1985	Laura Klamm	P/SS	162	58	.358
1986	Laura Klamm	P/SS	182	48	.335
1987	Tish Yarnell	1B	---	--	.328
1988	Jill Fischer	---	148	51	.345
1989	Rina Hembrough	SS	125	51	.408
1990	Sherri Spangler	3B	146	56	.384
1991	Jenny Klamm	SS	147	42	.286
1992	Brandi Steinmetz	SS	131	41	.313
1993	Brandi Steinmetz	SS	142	60	.423
1994	Chris Torrez	OF	167	59	.353
1995	Chris Torrez	OF	177	81	.458
1996	Chris Torrez	OF	151	66	.437
1997	Shelley Cole	OF	137	49	.358
1998	Torrie Beauchamp	OF	140	58	.414
1999	Torrie Beauchamp	OF	218	85	.390
2000	Carrie Kaberline	SS	185	73	.395
2001	Brooke Lyons	OF	122	48	.393

Earned Run Average

Year	Pitcher	IP	ER	ERA
1984	Laura Klamm	150.0	10	0.47
1985	N/A			
1986	Laura Klamm	262.0	20	0.53
1987	Diana Klamm	----	--	1.00
1988	Vicki Fund	182.0	36	1.38
1989	Vicki Fund	261.2	48	1.64
1990	Rhonda Rouck	129.7	16	0.86
1991	Rhonda Rouck	115.3	22	1.34
1992	Rhonda Rouck	118.0	33	1.96
	Shannon Rhodes	157.0	44	1.96
1993	Shannon Rhodes	153.7	29	1.32
1994	Cheryl Pruitt	203.0	61	2.10
1995	Cheryl Pruitt	120.7	35	2.03
1996	Tammy Sauer	146.7	40	1.91
1997	Elizabeth Anthony	85.1	16	1.31
1998	Amy Heiman	139.7	47	2.36
1999	Amy Heiman	241.7	58	1.68
2000	Kathy Mohler	234.0	59	1.76
2001	Amy Heiman	158.0	41	1.82

Lady Blues Record Book

Miscellaneous Records

Longest Game By Innings:

15, vs. Winthrop, 1985

Most Runs In an Inning:

14, vs. Southwest State (Minn.), 2001

Most Consecutive Games without Being Shutout:

22, 1992

Most Games Played in a Season:

65, 1999

Most Wins in a Season:

50, 1986 (50-12)

Most Losses in a Season:

32, 1994 (22-32-1)

Longest Winning Streak:

20, 1986

Longest Losing Streak:

8, 2001

Best Winning Percentage:

.806, 1986 (50-12)

Worst Winning Percentage:

.409, 1994 (22-32-1)

General

Most Games Played

Season:

65 - Torrie Beauchamp, Marcy Scott, Stacie Carpenter, Carrie Kaberline - 1999

55 - Chris Torrez, Angie Guerin, Chris Shaffer, Kelley Jordan - 1994

Career:

211 - Carrie Kaberline, 1997-00
202 - Marcy Scott, 1996-1999
199 - Chris Torrez, 1993-1996,
Stacie Carpenter, 1998-2001

Batting

Most At-Bats

Game:

6- Stacie Carpenter, vs. Augustana, 2001

6- Kristen Cheney, vs. Augustana, 2001

6- Brooke Lyons, vs. Augustana, 2001

6- Katie Schmidt, vs. Augustana, 2001

6 - Torrie Beauchamp, vs. Emporia State, 1999

6 - Marcy Scott, vs. Northwest Missouri, 1999

6 - Kathy Mohler, vs. Northwest

Missouri, 1999

6 - Jo Wodtke, vs. Missouri Western, 1991

6 - Deniece Hanson, vs. Missouri Western, 1991

6 - Shelly Burke, vs. Missouri Western, 1991

6 - Diana Paul, vs. Missouri Western, 1991

6 - Mendy Simecka, vs. Emporia State, 1994

Season:

218 - Torrie Beauchamp, 1999

190 - Lori Catron, 1986

Career:

666 - Torrie Beauchamp, 1999

616 - Chris Torrez, 1993-96

Most Hits

Game:

5 - Julie Blaufuss, vs. Augustana, 2001

4 - Jenny Klamm, vs. Benedictine, 1990

4 - Sherri Spangler, vs. Central Oklahoma, 1990

4 - Sherri Spangler, vs. Missouri Western, 1990

4 - Mendy Simecka, vs. Avila, 1993

4 - Mendy Simecka, vs. UCCS, 1993

4 - Brandi Steinmetz, vs. Avila, 1993

4 - Brandi Steinmetz, vs. Missouri Western, 1993

4 - Jenny Klamm vs. Avila, 1993

4 - Jenny Klamm vs. Nebraska-Kearney, 1993

4 - Chris Torrez, vs. Central Oklahoma, 1994;

4 - Chris Torrez, vs. South Dakota, Dana & Sterling, 1995

4 - Renee Harders vs. Pittsburg State, 1995

4 - Chris Kline vs. Kansas Newman, 1995

4 - Angie Guerin vs. Colorado Mines, 1995

4 - Marcy Scott vs. Pittsburg State, 1996

4 - Kathy Mohler, vs. Erskine, 1999

4 - Kathy Mohler, vs. Northwest Missouri, 1999

4 - Marcy Scott, vs. Northwest Missouri, 1999

4 - Torrie Beauchamp, vs.

Northwest Missouri, 1999

4 - Kristen Cheney, vs. Fort Hays State, 2000

4 - Stacie Carpenter, vs. Northwest Missouri, 2000

Season:

85 - Torrie Beauchamp, 1999

81 - Chris Torrez, 1995

Career:

258 - Torrie Beauchamp, 1996-99 *MIAA Record

245 - Chris Torrez, 1993-96

Highest Batting Average

Season:

.458 - Chris Torrez, 1995, (81 H, 171 AB)

Career:

.398 - Chris Torrez, 1993-96 (245 H, 616 AB)

Most Runs Scored

Game:

4 - Mendy Simecka, vs. UCCS, 1993

4 - Shelly (Burke) DeHart, vs. UCCS, 1993

4 - Brandi Steinmetz, vs. UCCS, 1993

4 - Jenny Klamm, vs. UCCS, 1993

4 - Brandi Steinmetz, vs. Avila, 1993

4 - Jenny Klamm, vs. Avila, 1993

Season:

50 - Torrie Beauchamp, 1999

44 - Chris Torrez, 1996

Career:

175 - Torrie Beauchamp, 1999 *MIAA Record

148 - Chris Torrez, 1993-96

Most Runs Batted In

Game:

5 - Kristen Cheney vs Newman, 2001

5 - Rina Hembrough, vs. Bethany, 1990

5 - Jodee Jensen, vs. Illinois-Chicago, 1992

5 - Shelly (Burke) DeHart, vs. Neb.-Kearney, 1993

Lady Blues Record Book

Most Runs Batted In

Game continued:

5 - Julie Blaufuss, vs. Wayne State, 2000

Season:

52 - Chris Torrez, 1996

Career:

167 - Chris Torrez, 1993-96

Most Doubles

Game:

3 - Mendy Simecka, vs. Avila, 1993

3 - Carrie Kaberline, vs. Incarnate Word, 2000

Season:

22 - Carrie Kaberline, 2000

22 - Stacie Carpenter, 2000

15 - Carrie Kaberline, 1999

14 - Angie Guerin, 1994

14 - Stacie Carpenter, 2001

Career:

56 - Stacie Carpenter, 1998-2001

49 - Carrie Kaberline, 1997-2000

Most Triples

Game:

2 - Sherri Spangler, vs. Benedictine, 1990

Season:

10 - Tish Yarnell, 1986

Career:

21 - Tish Yarnell, 1985-88

Most Home Runs

Game:

2 - Carrie Kaberline, vs. Truman State, 2000

2 - Carrie Kaberline, vs. Northwest Missouri, 2000

2 - Stacie Carpenter, vs. Fort Hays State, 2000

2 - Amanda Vawter, vs. Pittsburg State, 1998

2 - Carrie Kaberline vs. Pittsburg State, 1998 (twice; different games)

2 - Carrie Kaberline vs. Eastern New Mexico, 1997

2 - Chris Torrez vs. Nebraska-Omaha, 1994

2 - Chris Torrez vs.

Colorado Mines, 1995

2 - Renee Harders, vs. Wayne State, 1994

2 - Renee Harders, vs. Missouri Southern, 1995

Season:

11 - Chris Torrez, 1994

Career:

32 - Chris Torrez, 1993-96

Most Stolen Bases

Game:

6 - Chris Shaffer, vs. Southwest Baptist, 1994

Season:

33 - Torrie Beauchamp, 1999

29 - Jenny Klamm, 1990

29 - Jo Wodtke, 1990

Career:

87 - Torrie Beauchamp, 1996-1999

59 - Jenny Klamm, 1990-93

Most Bases on Balls

Game:

3 - Stacie Carpenter, vs. Augustana, 1999

3 - Diana Paul, vs. Quincy, 1992

3 - Shelly (Burke) DeHart, vs. Incarnate Word, 1993

3 - Angie Guerin, vs. Northwest

Missouri State, 1994

3 - Chris Torrez vs. Northwest Missouri State, 1995

3 - Renee Harders vs. Northwest Missouri State, 1995

3 - Cory Bergstrom vs. Truman State, 1995

Season:

24 - Chris Torrez, 1995

Career:

53 - Chris Torrez, 1993-96

Pitching

Most Appearances

Season:

42 - Amy Heiman, 1999

38 - Kathy Mohler, 2000

37 - Laura Klamm, 1986

Career:

137 - Amy Heiman, 1998-2001

133 - Kathy Mohler, 1997-2000

103 - Jenny Klamm, 1983-86

Most Innings Pitched

Game:

13 - Kathy Mohler, vs. Emporia State, 1999

11 - Stacey Davis, vs. Emporia State, 1994

Season:

262 - Laura Klamm, 1986

Career:

727.7 - Kathy Mohler, 1997-2000

704 - Amy Heiman, 1998-2001

513.7 - Shannon Rhodes, 1990-93

Lowest Earned Run Average

Season:

0.47 - Laura Klamm, 1984 (10 ER/150IP)

Career:

1.52 - Rhonda Rouck, 1990-93 (105 ER/ 482.0 IP)

Most Strikeouts/7 Innings

Season:

4.76 - Laura Klamm 1986 (178 K/262 IP)

Career:

4.05 - Shannon Rhodes, 1990-93 (297 K/ 513.7 IP)

Fewest Base on Balls/7 Innings

Season:

0.40 - Laura Klamm, 1986 (15 BB/262 IP)

Career:

1.72 - Kathy Mohler, 1997-2000 (179 BB/727.7 IP)

1.82 - Rhonda Rouck, 1990-93 (126 BB/ 482.0 IP)

Most Shutouts

Season:

13 - Amy Heiman, 1999

8 - Rhonda Rouck, 1990;

8 - Shannon Rhodes, 1993

Career:

25 - Amy Heiman, 1998-2001

18 - Shannon Rhodes, 1990-93;

18 - Rhonda Rouck, 1990-93

Most Wins

Season:

30 - Laura Klamm, 1986 (30-7)

Career:

79 - Laura Klamm, 1983-86 (79-27)

Best Winning Percentage

Lady Blues Record Book

Season:
.818 - Shannon Rhodes, 1993
(18-4)

Career:
.745 - Laura Klamm, 1983-86
(79-27)

Most No-Hit Games

Season:
2 - Rhonda Rouck, 1990
2 - Shannon Rhodes, 1993

Career:
2 - Rhonda Rouck, 1990-93
2 - Shannon Rhodes, 1990-93

Fielding

Most Putouts

Game:
19 - Stacie Carpenter, vs.
Emporia State, 1999
15 - Tara Phillips, vs. Lincoln,
1995

Season:
509 - Tish Yarnell, 1986

Career:
1240 - Tish Yarnell, 1985-88
1226 - Stacie Carpenter, 1998-
2001
704 - Erin Rhodes, 1991-93

Most Assists

Game:
13 - Shannon Rhodes, vs.
Missouri Western, 1991

Season:
178 - Cory Bergstrom, 1995

Career:
349 - Carrie Kaberline, 1997-
2000

Highest Fielding Percentage (min. 100 total chances)

Season:
By Position Player
.996 - Dawn Nachbar, 2000
(116 PO/127 A/1E)
.996 - Connie George, 1984
(246 PO/9 A/1E)

By Catcher
1.000 - Julie Blaufuss, 2000
(130 PO/22 A/0 E)

Career:
.980 - Dawn Nachbar, 1999-pr
(226 PO/222 A/9 E)
.957 - Shannon Rhodes, 1990-

93, (20 PO/272 A/13 E)

Batting

Most At-Bats

Game:
46 - Augustana, 2001

Season:
1,663 - 1999
1,566 - 2000
1,593 - 1986

Most Hits

Game:
24 - vs. Avila, 1993

Season:
468 - 1999
464 - 1995

Highest Batting Average

Season:
.333 - 1996 (435 hits, 1,307 at-
bats)

Most Runs Scored

Game:
24 - Avila, 1993

Season:
280 - 1996
271 - 1999

Most Runs Batted In

Game:
24 - vs. Avila, 1993

Season:
229 - 1995
225 - 1999

Most Doubles

Game:
6 - vs. Avila, 1993
6 - vs. Incarnate Word, 2000

Season:
88 - 2000
80 - 1999
75 - 1994 & 1996

Most Triples

Game:
4 - vs. Avila, 1993

Season:
25 - 1986

Most Home Runs

Game:
4 - Colorado Mines, 1995

Season:

25 - 1994
24 - 2000

Most Stolen Bases

Game:
14 - vs. Southwest Baptist, 1994

Season:
221 - 1990

Most Bases on Balls

Game:
9 - Northwest Missouri, 1995

Season:
147 - 1996

Pitching

Most Shutouts

Season:
31 - 1986

Most Strikeouts/7 Innings

Season:
5.22 - 1984 (180 in 241
innings)

Fewest Base on Balls/ 7 innings

Season:
0.53 - 1986 (43 in 435 innings)

Fielding

Highest Fielding Percentage

Season:
.972 - 1986 (1,297 PO, 547 A,
52 E)

Most Double Plays

Season:
17 - 2000
16 - 1999
16 - 1995

Putouts

Game:
45, vs. Winthrop, 1985

Season:
1275 - 1999
1206 - 2000

Season Highs

Hits

1. Torrie Beauchamp	85 . 1999
2. Carrie Kaberline	73 . 2000
3. Marcy Scott	70 . 1996
4. Chris Torrez	66 . 1996
5. Kristen Cheney	63 . 2001
Torrie Beauchamp	63 . 1996
Stacie Carpenter	63 . 2000
8. Brandi Steinmetz	60 . 1993
9. Chris Torrez	59 . 1994
10. Torrie Beauchamp	58 . 1998

Home Runs

1. Chris Torrez	11 . 1994
2. Shelly (Burke) DeHart	9 . 1993
Shelly (Burke) DeHart	9 . 1992
Chris Torrez	9 . 1996
5. Stacie Carpenter	6 . 2000
Carrie Kaberline	6 . 2000
Latisha Yarnell	6 . 1985
Katie Schmidt	6 . 2001
9. Julie Blaufuss	5 . 2000
10. Julie Blaufuss	5 . 2001

Runs Scored

1. Torrie Beauchamp	50 . 1999
2. Hayle Beauchamp	45 . 2000
Torrie Beauchamp	45 . 1996
4. Chris Torrez	44 . 1996
5. Brandi Steinmetz	43 . 1993
6. Kristen Cheney	41 . 2001
Marcy Scott	41 . 1996
8. Jenny Klamm	40 . 1993
9. Torrie Beauchamp	38 . 1997
10. Shelly (Burke) DeHart	36 . 1992

Earned Run Average

1. Laura Klamm	0.47 . 1984
2. Carol Williams	0.49 . 1979
3. Rhonda Rouck	0.86 . 1990
4. Stephanie Reed	0.92 . 1990
5. Elizabeth Anthony	1.31 . 1997
6. Shannon Rhodes	1.32 . 1993
7. Rhonda Rouck	1.32 . 1993
8. Brenda Stalle	1.64 . 1978
9. Amy Heiman	1.68 . 1999
10. Kathy Mohler	1.76 . 2000

Assists

1. Cory Bergstrom	178 . 1995
2. Carrie Kaberline	149 . 1999
3. Jill Fischer	144 . 1988
4. Carrie Kaberline	138 . 2000
Chris Shaffer	138 . 1994
6. Sherri Spangler	129 . 1990
7. Dawn Nachbar	138 . 2000
8. Tara Steffan	120 . 2000
9. Tara Steffan	116 . 1999
10. Jenny Klamm	114 . 1991

Doubles

1. Carrie Kaberline	22 . 2000
Stacie Carpenter	22 . 2000
3. Carrie Kaberline	15 . 1999
4. Stacie Carpenter	14 . 2001
Marcy Scott	14 . 1996
Angie Guerin	14 . 1994
7. Chris Torrez	13 . 1994
Sherri Spangler	13 . 1990
9. Stacie Carpenter	12 . 1999
Shelley Cole	12 . 1998

Batting Average

1. Chris Torrez458 . 1995
2. Marcy Scott440 . 1996
3. Chris Torrez437 . 1996
4. Torrie Beauchamp423 . 1996
Brandi Steinmetz423 . 1993
6. Torrie Beauchamp414 . 1998
7. Rina Hembrough408 . 1989
8. Carrie Kaberline395 . 2000
9. Brooke Lyons393 . 2001
10. Kristen Cheney391 . 2001

Stolen Bases

1. Torrie Beauchamp	33 . 2000
2. Jenny Klamm	29 . 1990
Jo Wodtke	29 . 1990
3. Hayle Beauchamp	28 . 2000
4. Chris Shaffer	27 . 1994
Julie Michel	27 . 1990
Rina Hembrough	27 . 1990
7. Stephanie Reed	23 . 1988
Torrie Beauchamp	23 . 1998
9. two tied with 18	

Strikeouts

1. Amy Heiman	161 . 1999
2. Kathy Mohler	152 . 2000
3. Laura Klamm	122 . 1984
4. Carol Williams	104 . 1979
5. Shannon Rhodes	102 . 1992
6. Shannon Rhodes	99 . 1993
7. Kathy Mohler	92 . 1997
8. Brenda Stalle	87 . 1978
9. Amy Heiman	84 . 2001
10. Holly Reichel	83 . 2001

Putouts

1. Latisha Yarnell	509 . 1986
2. Stacie Carpenter	440 . 1999
3. Stacie Carpenter	429 . 2000
4. Latisha Yarnell	414 . 1985
5. Beth Kelsey	347 . 1990
6. Stacie Carpenter	334 . 2001
7. Latisha Yarnell	317 . 1988
8. Erin Rhodes	307 . 1991
9. Sherri Spangler	285 . 1989
10. Carrie Kaberline	272 . 1998

Triples

1. Tish Yarnell	10 . 1986
2. Torrie Beauchamp	8 . 1999
3. Brandi Steinmetz	7 . 1992
4. Brandi Steinmetz	6 . 1993
Sherri Spangler	6 . 1990
Tish Yarnell	6 . 1985
7. Marcy Scott	5 . 1998
Chris Torrez	5 . 1996
Kim Campbell	5 . 1978
Shelly (Burke) DeHart	5 . 1991

Runs Batted In

1. Chris Torrez	52 . 1996
2. Shelly (Burke) DeHart	47 . 1993
Chris Torrez	47 . 1994
4. Carrie Kaberline	40 . 2000
5. Angie Guerin	38 . 1994
6. Stacie Carpenter	37 . 2001
Carrie Kaberline	37 . 1998
8. Stacie Carpenter	36 . 1999
9. Stacie Carpenter	35 . 2000
10. Carrie Kaberline	34 . 1999

Pitching Victories

1. Laura Klamm	30 . 1986
2. Kathy Mohler	22 . 2000
Amy Heiman	22 . 1999
4. Kathy Mohler	19 . 1999
5. Shannon Rhodes	18 . 1993
Vicki Fund	18 . 1988
7. Laura Klamm	17 . 1984
8. Kathy Mohler	16 . 1997
Shannon Rhodes	16 . 1992
10. Five tied	15

Fielding Percentage (min 200)

1. Julie Blaufuss	1.000 . 2000
2. Dawn Nachbar996 . 2000
Connie George996 . 1984
4. Amanda Vawter987 . 2000
5. Sherri Spangler986 . 1988
6. Elizabeth Anthony984 . 1997
Latisha Yarnell984 . 1985
8. Stacie Carpenter983 . 2000
Amanda Vawter983 . 1999
10. Two tied at982

Errors

1. Lenore Sparkman	30 . 1988
2. Carrie Kaberline	23 . 2000
3. Stacie Carpenter	20 . 1999
Shelly (Burke) DeHart	20 . 1992
5. Joy Marie Soerries	19 . 1998
Jill Fischer	19 . 1988
7. Shelly (Burke) DeHart	18 . 1993
8. Tara Steffan	17 . 2000
Judy Kibbee	17 . 1979
10. Sherri Spangler	16 . 1990

Career Highs

Hits

1. Torrie Beauchamp.....	1996-99.....	258
2. Chris Torrez.....	1993-96.....	245
3. Marcy Scott.....	1996-99.....	210
4. Carrie Kaberline.....	1997-2000.....	207
5. Stacie Carpenter.....	1998-2001.....	190
6. Jenny Klamm.....	1990-93.....	185
7. Shelly (Burke) DeHart.....	1991-93.....	124
8. Kristen Cheney.....	1999-pr.....	103
9. Brandi Steinmetz.....	1992-93.....	101
10. Julie Blaufuss.....	2000-pr.....	97

Doubles

1. Stacie Carpenter.....	1998-2001.....	56
2. Carrie Kaberline.....	1997-2000.....	49
3. Chris Torrez.....	1993-96.....	44
4. Marcy Scott.....	1996-99.....	39

Triples

1. Tish Yarnell.....	1985-88.....	21
2. Chris Torrez.....	1993-96.....	15
3. Torrie Beauchamp.....	1996-99.....	13
4. Brandi Steinmetz.....	1992-93.....	13
Marcy Scott.....	1996-99.....	10
6. Shelly (Burke) DeHart.....	1991-93.....	8

Home Runs

1. Chris Torrez.....	1993-96.....	32
2. Shelly (Burke) DeHart.....	1991-93.....	22
3. Carrie Kaberline.....	1997-2000.....	22

Runs Batted In

1. Chris Torrez.....	1993-96.....	167
2. Carrie Kaberline.....	1997-2000.....	139
3. Stacie Carpenter.....	1998-2001.....	121
4. Shelly (Burke) DeHart.....	1991-93.....	107
5. Marcy Scott.....	1996-99.....	97
6. Torrie Beauchamp.....	1996-1999.....	88

Runs Scored

1. Torrie Beauchamp.....	1996-99.....	175
2. Chris Torrez.....	1993-96.....	148
3. Marcy Scott.....	1996-99.....	115
4. Stacie Carpenter.....	1998-2001.....	100
5. Jenny Klamm.....	1990-93.....	95
6. Shelly (Burke) DeHart.....	1991-93.....	76
7. Jo Wodtke.....	1989-91.....	75
8. Kristen Cheney.....	1999-pr.....	72
9. Brandi Steinmetz.....	1992-93.....	71
10. Hayle Beauchamp.....	1999-2000.....	63

Stolen Bases

1. Torrie Beauchamp.....	1996-99.....	87
2. Jenny Klamm.....	1990-93.....	59
3. Jo Wodtke.....	1989-91.....	54

Batting Average

1. Chris Torrez.....	1993-96.....	.458	245 Hits, 616 At-bats
2. Torrie Beauchamp.....	1996-99.....	.387	258 Hits, 666 At-bats
3. Shelly Cole.....	1997-98.....	.361	95 Hits, 263 At-bats
4. Marcy Scott.....	1996-99.....	.338	210 Hits, 622 At-bats
5. Stacie Carpenter.....	1998-2001.....	.337	190 Hits, 563 At-bats
6. Carrie Kaberline.....	1997-2000.....	.328	207 Hits, 631 At-bats
7. Shelly (Burke) DeHart.....	1991-93.....	.319	124 Hits, 388 At-bats
8. Kristen Cheney.....	1999-pr.....	.318	103 Hits, 324 At-bats
9. Jenny Klamm.....	1990-93.....	.315	185 Hits, 586 At-bats

Pitching Victories

1. Laura Klamm.....	1983-86.....	79
2. Kathy Mohler.....	1997-2000.....	69
3. Amy Heiman.....	1998-2001.....	65
4. Shannon Rhodes.....	1990-93.....	54

Assists

1. Carrie Kaberline.....	1997-2000.....	349
2. Joy Marie Soerries.....	1996-98.....	338
3. Marcy Scott.....	1996-99.....	308
4. Jenny Klamm.....	1990-93.....	293
5. Cory Bergstrom.....	1995-96.....	281
6. Tara Steffan.....	1999-2001.....	251
7. Dawn Nachbar.....	1999-pr.....	222

Putouts

1. Tish Yarnell.....	1985-88.....	1240
2. Stacie Carpenter.....	1998-2001.....	1226
3. Erin Rhodes.....	1990-94.....	704
4. Carrie Kaberline.....	1997-2000.....	696
5. Amanda Vawter.....	1998-2000.....	519

Year By Year Scores

1970 • 1-4

Coach Jan Nuzman

Mount St. Scholastic College	W
Kansas University L
Emporia State L
Wichita State L
Kansas State L

1971 • 2-3

Coach Jan Nuzman

Wichita State L 5-7
Kansas State W 19-15
Emporia State L 9-10
Kansas University L 7-5
Missouri Southern W

1972 • 3-2

Coach Connie Floyd

Kansas University L 14-16
Benedictine W 13-10
Kansas State W 18-8
Haskell Nations W 2-12
Emporia State L 0-6

1973 • 4-3

Coach Connie Floyd

Haskell Nations W 15-8
Emporia State W 6-1
Benedictine W 35-5
Kansas University L 12-22
Kansas State W 17-5
Wichita State L 4-7
Fort Hays State L 3-15

1974 • 3-3

Coach Connie Floyd

Emporia State L
Wichita State W
Fort Hays State W
Kansas State L
Kansas University L
Haskell Nations W

1975 • 8-3

Coach Dennis McCool

Benedictine W
Emporia State L
Fort Hays State W
Kansas Wesleyan L
Marymount (Iowa) W
Pittsburg State W
Wichita State L
Kansas University W
Kansas State W
Benedictine W
Marymount (Iowa) W

1976 • 7-5

Coach Dennis Bean

Southwest Baptist W 10-4
Southwest Baptist W 11-9
Kansas Wesleyan W 19-2
Kansas Wesleyan W 13-3
Fort Hays State L 12-15
Fort Hays State L 3-12
Benedictine L 6-7
Benedictine W 15-3
Pittsburg State W 4-2

Pittsburg State W 8-6
Northwest Missouri L 0-2
Northwest Missouri L 0-10

1977 • 5-14

Coach Bob Chipman

Kansas State L 0-12
Kansas State L 0-16
Pittsburg State L 4-23
Pittsburg State L 6-18
Missouri Southern L 10-15
Missouri Southern L 9-29
Wayne State (Neb.) L 0-30
Wayne State (Neb.) W 8-4
Fort Hays State L 0-14
Fort Hays State L 1-11
Wichita State W 8-7
Wichita State L 3-20
Emporia State L 4-14
Emporia State W 9-5
Missouri Western W 6-4
Missouri Western L 3-4
Benedictine L 1-3
Benedictine L 5-9
Kansas Wesleyan W 13-6

1978 • 16-14

Coach Jessie Furrer

Only win-loss recorded

1979 • 14-13

Coach Patty Dick

Wichita State L 1-2
Wichita State L 0-12
Kansas State L 1-4
Kansas State L 4-7
Fort Hays State L 0-3
Fort Hays State L 3-4
Pittsburg State L 1-2
Pittsburg State L 0-12
Marycrest (Iowa) W 8-5
Marycrest (Iowa) W 10-3
Emporia State L 5-7
Wichita State W 8-2
Wichita State W 8-5
Benedictine W 1-0
Benedictine W 7-3
Bethany W 14-1
Marymount (Iowa) W 9-2
Emporia State L 1-2
Fort Hays State L 2-8
Johnson County W 1-0
Johnson County W 9-1
Missouri Southern W 6-5
Emporia State L 1-6
Wayne State (Neb.) W 2-1
Fort Hays State W 1-0
Missouri Western W 11-1
Emporia State L 1-6

1980 • 9-13

Coach Patty Dick

Pittsburg State L 6-11
Pittsburg State L 3-5
Cloud County L 0-8
Cloud County W 7-0
Emporia State L 2-18
Emporia State L 2-4

Johnson County L 1-4
Johnson County L 1-4
Johnson County L 2-10
Johnson County W 2-0
Benedictine L 0-11
Benedictine W 8-1
Wichita State W 14-3
Wichita State L 10-11
Wichita State L 1-10
Wichita State W 4-3
Johnson County W 18-10
Johnson County W 12-2
Emporia State L 0-2
Missouri Western W 2-0
Fort Hays State W 11-3
Wayne State (Neb.) L 5-13

1981 • 7-18

Coach Patty Dick

Fort Hays State W 8-3
Fort Hays State W 13-0
Creighton (Neb.) L 0-4
St. Mary's of the Plains 5-6
Emporia State L 3-11
Wichita State L 3-5
Wichita State W 5-4
Wichita State L 6-10
Benedictine L 3-4
Southwest Baptist L 1-7
Marymount (Iowa) W 10-5
Kansas State L 0-2
Kansas State L 2-5
Kansas State L 3-6
Kansas State L 0-20
Benedictine L 3-5
Benedictine L 2-11
Pittsburg State L 1-2
Pittsburg State L 1-3
Friends W 10-2
St. Mary's of the Plains L 2-10
Benedictine L 6-9
Friends W 7-0
Friends W 8-2

1982 • 10-20

Coach Patty Dick

Fort Hays State L 2-15
Fort Hays State W 9-6
Friends L 3-8
Friends W 8-0
Emporia State W 2-0
St. Mary's of the Plains W 14-8
Missouri Western L 0-4
Benedictine L 1-5
Benedictine L 2-3
Missouri Western L 0-7
Missouri Western W 6-5
Bethany W 15-2
Marymount (Iowa) L 11-15
Baker L 1-5
Benedictine W 9-3
Fort Hays State L 4-7
Kansas State L 0-4
Kansas State L 0-4
North Dakota L 4-5
William Woods (Mo.) L 6-7
Pittsburg State L 3-7
Emporia State W 4-3

Pittsburg State L 1-13
Tabor (Kan.) W 8-3
Fort Hays State L 1-2
Nebraska-Kearney L 0-4
Fort Hays State W 6-2
Pittsburg State L 0-3
^Wichita State L 0-12
^Wichita State W 6-5
^NAIA District 10 Playoffs	

1983 • 12-12

Coach Linda Moley

Northwest Iowa W 7-4
Bethany W 15-5
Kansas State L 1-3
Kansas State L 2-7
Johnson County W 5-3
Johnson County W 4-1
Northern Iowa L 0-4
Nebraska-Omaha L 0-5
Pittsburg State W 1-0
Pittsburg State L 0-5
Fort Hays State W 5-1
Fort Hays State L 0-1
Johnson County W 7-5
Johnson County L 2-10
Missouri Western L 1-2
Wayne State (Neb.) W 3-0
Wayne State (Neb.) L 0-2
Nebraska-Kearney L 0-2
Emporia State L 0-4
Wichita State W 3-0
Baker W 8-0
Emporia State L 6-8
Friends W 1-0
Pittsburg State W 1-0
Emporia State L 1-3

1984 • 26-9

Coach Linda Moley

St. Mary's of the Plains W 2-1
St. Mary's of the Plains W 3-1
Stephen F. Austin (Texas) L 0-1
Ausburg College W 1-0
Emporia State L 0-2
Fort Hays State L 1-3
Fort Hays State W 10-3
Baker W 8-0
Baker W 8-1
St. Mary's of the Plains W 1-0
Sterling College W 5-1
Fort Hays State W 7-0
Bethany W 12-0
Nebraska-Kearney W 3-1
Nebraska-Kearney L 0-1
Indiana State W 2-1
Indiana State L 1-2
Benedictine W 4-0
Cloud County W 3-0
Benedictine W 8-0
Benedictine W 1-0
Marymount (Iowa) W 9-1
Marymount (Iowa) W 7-0
Missouri Baptist W 4-0
Nebraska-Kearney W 9-1
Emporia State L 0-5
Missouri Southern L 4-5
Marymount W 4-1

Year By Year Scores

Marymount W 4-1
 Friends W 2-1
 Emporia State L 0-6
 St. Mary's of the Plains W 1-0
 Fort Hays State W 6-3
 Pittsburg State W 2-0
 Emporia State L 0-1

1985 • 34-17 Coach Linda Moley

Only win-loss recorded

1986 • 50-12 Coach Linda Moley

Benedictine W 6-0
 Benedictine W 5-0
 Simpson (Iowa) W 4-3
 Tarkio (Mo.) W 4-0
 Missouri Western L 0-1
 Northeastern Oklahoma W 1-0
 Wisconsin-Eau Claire W 9-0
 Northeastern Oklahoma W 1-0
 Missouri Western W 10-0
 Northwest Missouri W 2-1
 St. Mary's of the Plains W 6-3
 St. Mary's of the Plains W 10-1
 St. Mary's of the Plains W 12-4
 William Jewell (Mo.) W 7-1
 Concordia (Minn.) W 11-2
 Missouri Western W 10-1
 Emporia State W 8-0
 Central Missouri W 2-0
 Central Missouri W 1-0
 Nebraska-Kearney W 1-0
 St. Xavier (Ill.) W 2-0
 Wayne State (Neb.) W 3-2
 St. Cloud (Minn.) W 5-0
 Mankato State (Minn.) W 3-2
 Illinois-Chicago W 4-2
 Creighton (Neb.) L 1-2
 Benedictine W 4-0
 Emporia State W 9-0
 Baker W 2-0
 Peru State (Neb.) W 7-0
 Pittsburg State W 2-0
 Benedictine W 6-0
 Oklahoma City W 1-0
 Nebraska-Kearney W 1-0
 Nebraska-Kearney L 2-3
 Nebraska-Kearney W 6-1
 Northwest Missouri W 2-1
 Central Missouri W 1-0
 Missouri Western W 1-0
 Briar Cliff (Iowa) W 5-0
 Emporia State W 3-1
 Truman State L 0-1
 Wichita State W 2-0
 Wichita State W 1-0
 #Fort Hays State W 9-1
 #Wayne State (Neb.) L 1-4
 #Nebraska-Kearney W 2-1
 #Missouri Southern W 1-0
 #Wayne State (Neb.) L 0-3
 Northwest Missouri W 2-1
 Northwest Missouri L 1-2
 ^Emporia State W 1-0
 ^Baker W 5-0
 ^Pittsburg State W 3-1

\$Oklahoma City W 3-1
 \$Oklahoma City L 0-1
 \$Oklahoma City L 0-1
 !Pacific Lutheran (Wash.) W 3-0
 !Southern Utah W 9-1
 !IUPUI-Indianapolis L 1-6
 !Missouri Southern L 2-3
 #CSIC Tournament
 ^NAIA District 10 Playoffs
 ^NAIA Bi-District IV Playoffs
 !NAIA National Tournament

1987 • 35-21 Coach Linda Moley

Only win-loss recorded

1988 • 31-18 Coach Kelly Stauffer

Missouri-Kansas City L 9-11
 Missouri Western W 7-4
 Missouri Western L 6-10
 Oklahoma City L 0-1
 Oklahoma City W 3-1
 Missouri Southern L 0-4
 Simpson College (Iowa) W 5-4
 Friends W 7-0
 Wartburg College (Iowa) W 6-2
 Missouri Western L 0-2
 Baker W 7-0
 Baker W 11-4
 Kansas University L 0-4
 Kansas University L 0-7
 Emporia State W 8-7
 Central State (Okla.) L 4-8
 Northeastern State (Okla.) L 3-4
 Missouri Southern W 5-3
 Cameron (Okla.) W 5-4
 Oklahoma Baptist W 2-0
 Oklahoma City L 1-6
 Central Missouri W 10-9
 Central Missouri W 9-2
 Truman State W 2-0
 Oklahoma City W 4-2
 Missouri Southern W 5-3
 Oklahoma City L 0-5
 Friends L 2-3
 Emporia State W 9-0
 Pittsburg State W 8-0
 Pittsburg State W 3-1
 Missouri-Kansas City L 3-6
 Missouri-Kansas City W 10-0
 Northwest Missouri W 10-3
 Northwest Missouri W 5-2
 #Nebraska-Kearney L 0-1
 ^Emporia State W 6-2
 #Missouri Western W 8-1
 #Missouri Southern L 2-3
 ^Sterling College W 4-0
 ^Kansas Wesleyan W 5-2
 ^Pittsburg State W 5-2
 \$Central State (Okla.) L 2-5
 \$Central State (Okla.) W 6-2
 \$Central State (Okla.) W 4-1
 !St. Mary's College (Tex.) W 7-3
 !St. Francis College (Ill.) W 2-1
 !Minnesota-Duluth L 5-7
 !Oklahoma City L 0-5
 #CSIC Tournament

^NAIA District 10 Playoffs
 \$NAIA Bi-District IV Playoffs
 !NAIA National Tournament

1989 • 25-19 Coach Kelly Stauffer

Only win-loss recorded

1990 • 38-10 Coach Kelly Stauffer

Centenary (La.) W 6-3
 Wisconsin-Oshkosh W 5-3
 Wisconsin-Oshkosh W 7-0
 Wisconsin-Superior W 3-2
 Wisconsin-Superior W 1-0
 Luther (Iowa) W 9-0
 Central State (Okla.) W 4-3
 Livingston (Ala.) W 6-3
 Houston Baptist (Texas) W 4-2
 Luther (Iowa) W 4-1
 Central State (Okla.) W 1-0
 Emporia State W 2-0
 Friends W 3-2
 Northwest Missouri W 4-3
 Northwest Missouri W 5-3
 Central Missouri W 6-1
 Lincoln (Mo.) W 5-1
 Kansas Wesleyan L 5-7
 Baker L 0-2
 Kansas Wesleyan W 9-0
 Baker W 5-1
 Kansas University L 2-6
 Kansas University L 2-6
 Lincoln (Mo.) W 9-2
 Central Missouri W 5-2
 Truman State W 7-0
 Truman State W 3-0
 Missouri Western W 2-1
 Missouri Western W 5-2
 Nebraska-Omaha W 3-1
 Missouri Southern L 1-6
 Tarkio (Mo.) W 4-0
 Truman State W 8-1
 Augustana (S.D.) L 0-2
 Bethany W 10-0
 Bethany W 13-0
 Emporia State L 1-4
 Emporia State L 1-6
 Kansas University W 6-5
 Benedictine W 10-0
 Emporia State W 2-1
 Baker W 5-1
 Pittsburg State W 3-0
 ^Benedictine W 11-0
 ^Kansas Wesleyan W 6-2
 \$Emporia State W 5-4
 \$Oklahoma City L 0-1
 \$Oklahoma City L 3-6
 ^NAIA District 10 Playoffs
 \$NAIA Bi-District IV Playoffs

Missouri-Kansas City W 5-3
 Missouri-Kansas City W 9-1
 Kansas University L 0-8
 Kansas University L 0-13
 Central Missouri L 1-3
 Truman State W 10-0
 Missouri Western W 7-2
 Northwest Missouri W 1-0
 Lincoln (Mo.) W 3-0
 Friends L 3-4
 Emporia State W 4-3
 Missouri Western W 6-1
 Central State (Okla.) L 1-2
 Southwest Baptist W 5-0
 Northwest Missouri L 3-4
 Northwest Missouri W 2-0
 Missouri Western L 5-6
 Kansas University L 0-7
 Kansas University L 6-13
 Oklahoma L 0-7
 Oklahoma W 3-0
 St. Xavier (Ill.) L 0-8
 Bradley (Ill.) W 3-1
 Drake (Iowa) W 2-1
 Saginaw Valley (Mich.) W 4-3
 Northern Iowa L 0-4
 Pittsburg State W 2-1
 St. Cloud State (Minn.) W 1-0
 Northern Iowa L 2-4
 Lincoln (Mo.) W 5-0
 Central Missouri L 2-4
 Truman State W 12-6
 Missouri Southern W 4-0
 Missouri Western W 2-1
 Augustana (S.D.) W 4-2
 Nebraska-Omaha L 1-10
 Nebraska-Omaha L 2-9
 Nebraska-Omaha L 0-7
 ^Pittsburg State W 2-0
 ^Missouri Southern L 0-3
 ^Central Missouri L 0-4
 ^MIAA Tournament

1992 • 26-23 Coach Kelly Osburn

Oklahoma Baptist W 5-1
 Oklahoma City L 2-9
 Oklahoma City L 1-2
 Northeastern State (Okla.) L 3-4
 Northeastern State (Okla.) L 1-4
 Quincy (Ill.) W 4-2
 Truman State W 5-4
 Missouri Southern L 0-7
 Northeastern (Okla.) W 9-0
 Emporia State W 5-3
 Missouri Southern L 3-10
 Central Missouri W 8-1
 Central Missouri W 11-4
 Northeastern (Okla.) L 1-2
 Grand View (Iowa) W 7-0
 Quincy (Ill.) W 7-2
 Pittsburg State L 2-5
 Kansas University L 0-9
 Kansas University L 1-3
 Friends W 5-2
 Central Missouri W 3-2
 Emporia State W 8-0
 Northwest Missouri W 1-0

1991 • 25-21 Coach Kelly Stauffer

Emporia State W 2-1
 Notre Dame (Ind.) W 3-1
 St. Mary (Neb.) L 0-1
 St. Edward's (Texas) W 4-3
 St. Mary's (Ind.) L 2-8

Year By Year Scores

Missouri Western	L 3-4
Mankato State (Minn.)	L 2-3
Truman State	L 2-9
Concordia-St. Paul (Minn.)	L 5-6
St. Cloud State (Minn.)	L 4-6
St. Xavier (Ill.)	W 5-1
Valparaiso (Ind.)	W 5-1
Illinois-Chicago	W 6-5
Saginaw Valley (Mich.)	L 4-5
Emporia State	L 1-2
Northwest Missouri	W 3-0
St. Mary's (Kan.)	L 1-2
Augustana (S.D.)	W 3-2
Nebraska-Kearney	W 7-4
Missouri Western	W 4-2
Central Missouri	W 11-3
Truman State	L 0-4
Oklahoma	W 6-1
Oklahoma	L 2-4
Pittsburg State	W 3-2
Missouri-Kansas City	W 6-2
Nebraska-Omaha	L 2-5
^Southwest Baptist	W 5-0
^Pittsburg State	L 2-3
^Missouri-Rolla	W 3-1
^Central Missouri	L 0-3
^MIAA Tournament		

1993 • 33-9

Coach Kelly Osburn

North Dakota State	W 6-3
North Dakota State	W 5-0
St. Edwards (Texas)	W 2-1
Avila (Kan.)	W 24-1
Incarnate Word (Texas)	W 11-0
Incarnate Word (Texas)	W 8-0
Texas Lutheran	W 10-3
Texas Lutheran	W 6-2
St. Mary's (Kan.)	W 7-6
St. Mary's (Kan.)	W 3-1
North Dakota	W 7-5
North Dakota	W 5-1
Colo.-Colorado Springs	W 22-0
Colo.-Colorado Springs	W 7-1
Missouri Western	W 2-1
Truman State	W 12-0
Emporia State	W 2-1
Northwest Missouri	W 2-0
Augustana (S.D.)	L 0-9
Concordia (Neb.)	W 7-0
St. Cloud (Minn.)	L 0-3
Missouri-St. Louis	W 7-6
Mankato State (Minn.)	W 6-4
St. Xavier (Ill.)	L 1-4
Emporia State	L 1-8
Northwest Missouri	W 7-3
Missouri-Kansas City	W 5-2
Missouri-Kansas City	W 9-1
Pittsburg State	W 3-2
Nebraska-Kearney	W 8-0
Nebraska-Kearney	L 2-6
Central Missouri	W 6-0
Central Missouri	W 5-4
Pittsburg State	L 5-8
SIU-Edwardsville	W 8-0
Quincy (Ill.)	L 1-6
South Dakota	W 8-1
Missouri Western	W 10-6

Truman State	W 7-0
^Missouri-Rolla	W 5-1
^Pittsburg State	L 0-1
^Emporia State	L 5-7
^MIAA Tournament		

1994 • 22-32-1

Coach Kelly Osburn

Nebraska-Kearney	L 1-8
Southwest Baptist	W 11-4
Central Oklahoma	W 10-8
New Mexico Highlands	W 9-6
Nebraska-Omaha	W 8-5
Nebraska-Kearney	L 0-2
Wayne State (Neb.)	L 2-3
Wayne State (Neb.)	W 6-4
Nebraska-Omaha	L 6-14
Nebraska-Omaha	L 11-12
Missouri Southern	L 0-4
North Dakota State	W 8-0
St. Cloud State (Minn.)	W 7-1
Nebraska-Kearney	L 4-6
Wayne State (Neb.)	L 0-9
Wayne State (Neb.)	W 14-3
Pittsburg State	L 0-7
New York Tech	W 5-1
Northwest Missouri	W 3-1
Northwest Missouri	W 6-5
Wisconsin-Superior	W 11-4
Emporia State	L 1-2
Central (Iowa)	W 4-0
Emporia State	W 5-7
Emporia State	T 5-5
Central Missouri	L 5-7
Central Missouri	L 3-5
Nebraska-Kearney	W 8-0
Nebraska-Kearney	L 4-5
Northwest Missouri	L 3-7
Emporia State	L 2-3
Oklahoma	L 0-17
Pittsburg State	L 0-11
Pittsburg State	L 0-4
Truman State	L 2-10
Missouri Western	W 4-2
Central Missouri	L 1-3
Central Missouri	L 0-16
Oklahoma City	L 5-6
Benedictine	W 7-0
Pittsburg State	L 1-2
Northwest Missouri	L 0-1
Emporia State	W 6-1
Emporia State	L 3-5
*Missouri-Rolla	W 6-5
*Southwest Baptist	W 11-9
*Missouri-St. Louis	W 6-5
*Pittsburg State	L 2-3
*Lincoln (Mo.)	W 11-2
*Missouri Southern	L 0-4
^Missouri Western	L 3-12
^Lincoln (Mo.)	W 4-3
^Missouri-St. Louis	L 2-5
Nebraska-Omaha	L 3-4
Nebraska-Omaha	L 11-10
*MIAA Interdivision Tournament		
^MIAA Tournament		

1995 • 31-22

Coach Kevin Blaskowski

Nebraska-Omaha	W 5-4
Nebraska-Omaha	L 2-11
Northeastern State (Okla.)	L 3-6
William Penn (Iowa)	L 3-4
Central College	W 5-2
South Dakota State	W 18-3
South Dakota	W 19-3
South Dakota	W 8-5
Pittsburg State	L 5-8
Pittsburg State	L 2-9
Central College (Iowa)	L 0-1
Pittsburg State	L 1-6
Northeastern State (Okla.)	L 5-6
Central College	L 4-5
Pittsburg State	L 4-6
Northeastern State (Okla.)	W 8-7
Dana (Neb.)	W 6-3
Dana (Neb.)	W 7-6
Emporia State	L 6-7
Emporia State	W 9-4
Emporia State	L 4-10
St. Mary's (Kan.)	W 4-0
Central Oklahoma	W 7-0
Sterling (Kan.)	W 7-0
Central Oklahoma	W 7-0
Emporia State	W 5-4
Missouri Southern	L 0-4
Kansas Newman	W 10-6
Kansas Newman	W 12-6
Northwest Missouri	W 3-1
Northwest Missouri	W 10-3
Truman State	W 6-5
Truman State	W 8-0
Central Missouri	L 3-4
Central Missouri	L 1-5
Nebraska-Kearney	L 3-9
Doane (Neb.)	W 4-0
Regis (Colo.)	W 4-0
Colo. School of Mines	W 11-2
Morningside (Iowa)	L 3-6
Pittsburg State	L 4-9
Pittsburg State	W 4-3
Missouri-St. Louis	W 5-1
Missouri Southern	L 5-6
Lincoln (Mo.)	W 3-1
Southwest Baptist	W 5-0
Missouri-Rolla	W 8-0
Pittsburg State	L 1-2
Missouri Western	W 8-4
Missouri Western	W 5-0
^Missouri-St. Louis	L 0-4
^Missouri Southern	W 1-0
^Pittsburg State	L 1-2
^MIAA Tournament		

1996 • 31-19

Coaches Kevin Blaskowski/John Punzo

Nebraska-Kearney	L 1-7
Northwest Missouri	L 2-3
Emporia State	L 1-6
Pittsburg State	L 0-9
Nebraska-Kearney	L 3-4
Nebraska-Omaha	L 2-3

Nebraska-Omaha	L 4-5
Peru State (Neb.)	W 1-0
Doane (Neb.)	W 14-1
Buena Vista (Neb.)	W 8-0
Baker	W 4-3
Baker	W 6-4
Peru State (Neb.)	W 5-0
Dana (Neb.)	W 6-2
Dana (Neb.)	W 11-3
Adams State (Colo.)	W 2-1
Adams State (Colo.)	W 7-4
Northwest Missouri	L 1-2
Northwest Missouri	L 1-2
Missouri Western	W 3-2
Missouri Western	W 10-1
Central (Iowa)	W 8-0
Southern Nazarene	W 8-1
Southern Colorado	L 1-2
Southern Colorado	W 12-1
Southern Colorado	W 11-3
Emporia State	W 8-0
Emporia State	L 7-8
Truman State	W 11-5
Truman State	W 4-3
Central Missouri	L 2-9
Central Missouri	L 3-13
Emporia State	W 10-4
Emporia State	W 3-0
Nebraska-Kearney	W 3-1
Oklahoma City	L 0-9
Emporia State	L 0-5
Southwest Baptist	W 11-0
Pittsburg State	W 9-0
Pittsburg State	W 13-1
Pittsburg State	W 13-4
Missouri-Rolla	W 4-0
Southwest Baptist	W 12-2
Lincoln (Mo.)	W 4-0
Missouri Southern	L 1-5
Missouri-St. Louis	L 7-8
^Pittsburg State	W 8-0
^Central Missouri	W 4-2
^Emporia State	L 10-12
^Missouri Southern	L 1-7
^MIAA Tournament		

1997 • 27-21

Coach Kim Newbern

South Dakota State	W 5-3
South Dakota State	W 4-0
Bethany	W 14-0
Bethany	W 11-3
Missouri Southern	W 3-1
South Dakota State	L 8-9
Central Arkansas	W 9-1
Central Iowa	W 5-3
Nebraska-Omaha	L 2-6
Baker	W 7-3
Baker	W 7-0
Missouri-Kansas City	W 9-8
Missouri-Kansas City	L 5-6
Central (Iowa)	W 1-0
Buena Vista (Neb.)	L 3-4
Eastern New Mexico	W 9-1
South Dakota State	L 3-4
Mississippi College	W 8-0
West Florida	W 5-0
Arkansas-Monticello	L 3-6

Year By Year Scores

Missouri Western L 3-7
 Lipscomb (Tenn.) W 8-5
 Lambuth (Tenn.) L 0-5
 Missouri Western L 0-3
 West Florida L 0-3
 Olivet Nazarene (Ill.) L 0-2
 Olivet Nazarene (Ill.) L 0-4
 Truman State W 7-6
 Truman State W 4-2
 Northwest Missouri L 1-2
 Northwest Missouri W 4-3
 Central Missouri L 0-3
 Central Missouri L 1-3
 Pittsburg State W 5-4
 Pittsburg State L 3-4
 Emporia State W 7-0
 Emporia State L 3-5
 Lincoln (Mo.) W 3-0
 Missouri Southern W 3-1
 Pittsburg State L 1-3
 Southwest Baptist W 7-1
 Missouri-Rolla W 4-2
 Wichita State L 1-5
 Wichita State W 4-1
 ^Missouri Western W 7-4
 ^Central Missouri L 0-4
 ^Emporia State W 6-3
 ^Missouri Western L 1-5
 ^MIAA Tournament

^Pittsburg State W 3-2
 ^Missouri Western W 3-2
 ^Central Missouri W 4-3
 ^Emporia State L 5-8
 ^MIAA Tournament

1999 • 41-24

Coch Kim Newbern

Tarleton State (Texas) L 2-3
 Northern Colorado W 9-0
 Southern Colorado W 4-1
 Western New Mexico W 7-3
 Colorado College W 14-0
 Southern Colorado W 9-1
 Western New Mexico L 3-4
 Southwest State (Minn.) W 5-1
 Central (Iowa) L 0-2
 Augustana (S.D.) L 2-8
 Pittsburg State W 1-0
 Columbia College (Mo.) W 1-0
 Augustana (S.D.) L 3-4
 Baker W 8-0
 Baker W 10-0
 Nebraska-Kearney L 0-3
 Nebraska-Kearney L 0-5
 Northern Colorado W 9-1
 Northern Colorado W 6-4
 Adelphi (N.Y.) W 6-1
 Wayne State (Mich.) W 2-1
 Florida Southern W 5-1
 Florida Tech L 2-6
 Minnesota-Duluth W 3-1
 Rollins College (Fla.) W 4-3
 Erskine W 2-0
 East Stroudsburg (Pa.) W 4-0
 East Stroudsburg (Pa.) W 11-3
 Erskine (S.C.) W 13-3
 Fort Hays State L 1-3
 Fort Hays State L 2-3
 Nebraska-Kearney W 4-0
 Nebraska-Kearney L 0-8
 Lincoln (Mo.) W 8-0
 Lincoln (Mo.) W 8-0
 Missouri-Rolla W 3-0
 Missouri-Rolla W 5-0
 Emporia State W 2-0
 Emporia State W 2-1
 Fort Hays State W 2-0
 Fort Hays State W 2-0
 North Dakota State L 7-12
 Morningside (Iowa) L 4-7
 Nebraska-Omaha L 1-2
 Minnesota-Duluth W 5-3
 Augustana (S.D.) L 0-4
 Pittsburg State L 3-4
 Southwest Baptist W 4-3
 Southwest Baptist W 4-3
 Central Missouri W 5-0
 Central Missouri L 0-2
 Missouri Southern W 2-0
 Missouri Southern L 0-2
 Truman State L 0-4
 Truman State W 5-4
 Northwest Missouri L 3-5
 Northwest Missouri W 20-10
 Pittsburg State W 3-0
 Missouri Western W 3-0
 Missouri Western W 6-1

^Northwest Missouri L 4-5
 ^Missouri Southern W 4-3
 ^Truman State L 0-1
 !Nebraska-Kearney L 0-4
 !Truman State L 3-6
 ^MIAA Tournament
 INCAA Regional Tournament

2000 • 38-20

Coch Kim Newbern

Eastern New Mexico W 11-6
 Nebraska-Kearney L 0-1
 Northwest Missouri L 3-8
 Missouri Western W 5-1
 Oklahoma Panhandle W 5-4
 Eastern New Mexico W 5-0
 Kansas L 0-5
 Nebraska-Omaha L 5-8
 Northwest Missouri W 5-2
 Nebraska-Omaha L 2-12
 Nebraska-Omaha L 2-3
 Bethany College W 2-0
 Bethany College W 8-2
 Wayne State (Neb.) W 8-0
 Wayne State (Neb.) W 10-4
 Coe College (Iowa) L 2-3
 Missouri-Rolla W 7-1
 Nebraska-Kearney L 0-2
 Nebraska-Kearney W 4-2
 North Dakota State L 1-6
 Park University (Mo.) W 5-1
 Eureka College (Ill.) W 8-0
 Vanguard (Calif.) W 1-0
 Abilene Christian (Texas) L 0-4
 Incarnate Word (Texas) L 7-8
 Newman (Kan.) W 3-2
 Newman (Kan.) W 1-0
 Pittsburg State W 5-4
 Pittsburg State W 7-0
 Fort Hays State W 3-2
 Fort Hays State L 0-6
 Nebraska-Omaha L 5-6
 South Dakota State W 6-5
 South Dakota W 4-0
 North Dakota State L 7-2
 Missouri Southern L 1-3
 Missouri Southern L 0-2
 Missouri Southern W 4-3
 Central Missouri W 7-4
 Truman State W 5-1
 Truman State W 4-2
 Missouri Western W 8-2
 Missouri Western W 6-0
 Emporia State L 2-6
 Emporia State W 6-0
 Missouri-Rolla W 4-3
 Missouri-Rolla W 4-3
 Southwest Baptist W 3-1
 Southwest Baptist W 3-0
 Fort Hays State W 7-0
 Fort Hays State L 6-8
 Northwest Missouri W 4-3
 Northwest Missouri W 5-1
 ^Missouri-Rolla W 6-0
 ^Pittsburg State W 2-1
 ^Truman State W 3-2
 ^Truman State L 1-2

^Truman State L 0-2
 ^MIAA Tournament Game

2001 • 28-21

Coch Kim Newbern

Southwest Baptist W 5-1
 Henderson State W 9-6
 Bethany W 13-0
 Bethany W 8-0
 Northwest Missouri W 4-2
 Central Arkansas L 1-6
 Central Oklahoma W 7-5
 Pittsburg State L 2-5
 Central Oklahoma L 6-9
 Fort Hays State W 7-5
 Fort Hays State W 3-1
 Arkansas-Monticello W 6-4
 Arkansas-Monticello L 0-3
 Grace College W 10-0
 Central Arkansas W 5-1
 Emporia State L 3-7
 Pittsburg State L 2-3
 Pittsburg State L 5-7
 Southwest State W 15-0
 Southwest State W 10-2
 Augustana L 4-5
 North Dakota W 3-0
 Nebraska-Omaha L 0-4
 South Dakota State W 7-1
 North Dakota State L 2-6
 Missouri Southern L 0-2
 Missouri Southern L 0-5
 Central Missouri L 4-6
 at Central Missouri L 0-4
 Truman State L 0-7
 at Truman State L 3-7
 Kansas L 0-3
 Emporia State W 3-1
 Emporia State W 3-2
 Missouri Western W 9-4
 Missouri Western W 8-0
 Missouri-Rolla W 4-3
 Missouri-Rolla W 5-4
 Southwest Baptist L 3-4
 Southwest Baptist W 8-1
 Northwest Missouri W 2-0
 Northwest Missouri L 2-5
 Fort Hays State W 9-3
 Fort Hays State W 6-0
 Newman W 5-0
 Newman W 7-2
 ^Central Missouri W 2-1
 ^Truman State L 3-6
 ^Missouri-Rolla L 5-7
 ^MIAA Tournament Game

1998 • 27-14

Coch Kim Newbern

Southwest Baptist W 9-0
 Central Arkansas W 2-0
 Delta State (Miss.) W 6-2
 Central Missouri W 8-1
 Oklahoma City L 1-7
 Nebraska-Kearney L 3-7
 Pittsburg State W 6-3
 Missouri Southern W 4-3
 Central Arkansas W 8-1
 Cameron (Okla.) W 3-1
 Northwest Missouri W 16-5
 Pittsburg State L 3-6
 Mankato State (Minn.) W 9-4
 St. Thomas Aquinas (N.Y.) W 8-2
 Georgia College W 4-2
 S. Connecticut State L 4-3
 East Stroudsburg (Pa.) W 9-3
 Mankato State (Minn.) W 7-0
 Nebraska-Omaha L 3-4
 Pittsburg State W 7-4
 Pittsburg State W 16-1
 Central Missouri L 2-3
 Central Missouri L 2-1
 Southwest Baptist W 1-0
 Southwest Baptist W 4-0
 Emporia State W 6-1
 Emporia State W 7-0
 Missouri Southern W 7-5
 Missouri Southern L 3-12
 Truman State W 4-1
 Truman State L 1-9
 Northwest Missouri W 8-4
 Northwest Missouri W 6-2
 Missouri Western L 3-4
 Missouri Western L 3-6
 ^Emporia State L 0-7

Northwest Missouri State University

Game Date: March 27 in Topeka

Location: Maryville, Mo.

Founded: 1905

Enrollment: 6,200

Nickname: Bearcats

Colors: Forest Green and white

President: Dr. Dean L. Hubbard

Director of Athletics: Dr. Bob Boerigter

SID: Andy Seeley

E-mail: nwsid@mail.nwmissouri.edu

Phone: 660.562.1118

Fax: 660.562.1582

Press Box Phone: N/A

Head Coach: Pam Knox

Alma Mater: Cal-State Fullerton

Record at NWMSU: 170-139 (7th year)

Overall Record: 170-139 (9th year)

Phone: 660.562.1783

Assistant Coaches: Jaime Klein, Melissa Angel

2001 Record: 21-23

MIAA Record/Finish: 10-7/4th

Letter winners returning/lost: 7/5

Record vs Washburn: WU leads 27-14

Last year results: W 4-2, W 2-0, L 2-5

Pittsburg State University

Game Date: April 2 in Topeka

Location: Pittsburg, Kan.

Founded: 1903

Enrollment: 6,377

Nickname: Gorillas

Colors: Crimson and gold

President: Dr. Tom Bryant

Director of Athletics: Chuck Broyles

SID: Dan Wilkes

E-mail: dwilkes@pittstate.edu

Phone: 316.235.4147

Fax: 316.235.4149

Press Box Phone: N/A

Head Coach: Jennifer Wells

Alma Mater: Oklahoma City - 1997

Record at PSU: First season

Overall Record: Same

Phone: 316.232.7947

Assistant Coaches: Melissa Sadler Marlene Dunleavy, Carol Kremer

2001 Record: 25-26

MIAA Record/Finish: 9-9/5th

Letter winners returning/lost: 3/10

Record vs Washburn: PSU leads 36-31

Last year results: L 2-3, L 5-7

Southwest Baptist University

Game Date: April 5 in Bolivar

Location: Bolivar, Mo.

Founded: 1878

Enrollment: 3,000

Nickname: Bearcats

Colors: Purple and white

President: Dr. C. Pat Taylor

Director of Athletics: Jim Middleton

SID: Joey Roberts

E-mail: jrrobert@sbuniv.edu

Phone: 417.328.1799

Fax: 417.328.1745

Press Box Phone: N/A

Head Coach: Dana Bradshaw

Alma Mater: Sam Houston State - 1999

Record at SBU: First season

Overall Record: Same

Phone: 417.328.1791

Assistant Coach: Tiffany Stanton

2001 Record: 14-38

MIAA Record/Finish: 5-13/9th

Letter winners returning/lost: 7/4

Record vs Washburn: WU leads 19-2

Last year results: W 5-1, L 3-4, W 8-1

MIAA Opponents

University of Missouri-Rolla

Game Date: April 6 in Rolla

Location: Rolla, Mo.

Founded: 1870

Enrollment: 4,456

Nickname: Lady Miners

Colors: Silver and gold

Chancellor: Dr. Gary Thomas

Director of Athletics: Mark Mullin

SID: John Kean

E-mail: jkean@umr.edu

Phone: 573.341.4140

Fax: 573.341.4880

Press Box Phone: 573.368.8431 (cell)

Head Coach: Dave Burwell

Alma Mater: Missouri-Rolla

Record at UMR: 156-182 (8th year)

Overall Record: Same

Phone: 573.341.4968

Assistant Coach: TBA

2001 Record: 23-33

MIAA Record/Finish: 6-12/T7th

Letter winners returning/lost: 13/2

Record vs Washburn: WU leads 14-1

Last year results: W 4-3, W 5-4, L 5-7

Missouri Southern State College

Game Date: April 9 - in Joplin

Location: Joplin, Mo.

Founded: 1968

Enrollment: 5,785

Nickname: Lady Lions

Colors: Green and gold

President: Dr. Julio S. Leon

Director of Athletics: Sallie Beard

SID: Joe Moore

E-mail: moore-j@mail.mssc.edu

Phone: 417.626.7485

Fax: 417.625.9397

Press Box Phone: N/A

Head Coach: Ron Faubion

Alma Mater: Oklahoma State - 1970

Record at MSSC: 52-12 (2nd year)

Overall Record: 236-75 (6th year)

Phone: 417.625.9573

Assistant Coach: Jennifer Jimerson

2001 Record: 52-12

MIAA Record/Finish: 17-1/1st

Letter winners returning/lost: 9/6

Record vs Washburn: MSSC leads 22-13

Last year results: L 0-2, L 0-5

Missouri Western State College

Game Date: April 17 - in Joplin

Location: St. Joseph, Mo.

Founded: 1969

Enrollment: 5,158

Nickname: Griffons

Colors: Black and gold

President: Dr. Brenda Blessing

Director of Athletics: Pete Chapman

SID: Brett King

E-mail: king@griffon.mwsc.edu

Phone: 816.271.4257

Fax: 816.271.4544

Press Box Phone: N/A

Head Coach: Jennifer Bagley

Alma Mater: Moorhead State - 1996

Record at MWSC: First season

Overall Record: Same

Phone: 816.271.4480

Assistant Coaches: Kari Tuton, Patty Hartenbower

2001 Record: 11-29

MIAA Record/Finish: 4-14/10th

Letter winners returning/lost: 4/9

Record vs Washburn: WU leads 31-15

Last year results: W 9-4, W 8-0

Truman State University

Game Date: April 19 in Topeka
Location: Kirksville, Mo.
Founded: 1867
Enrollment: 6,000
Nickname: Bulldogs
Colors: Purple and white
President: Dr. Jack Magruder
Director of Athletics: Jerry Wollmering
SID: Melissa Ware
E-mail: mware@truman.edu
Phone: 660.785.4276
Fax: 660.785.7475

Press Box Phone: 660.785.4175
Head Coach: Kristi Bredbenner
Alma Mater: Truman State, 2001
Record at TSU: First
Overall Record: Same
Phone: 660.785.4343
Assistant Coach: Missy Kane
2001 Record: 43-11-1
MIAA Record/Finish: 13-4/2nd
Letter winners returning/lost: 6/3
Record vs Washburn: WU leads 20-13
Last year results: L 0-7, L 3-7, L 3-6

Central Missouri State University

Game Date: April 20 in Topeka
Location: Warrensburg, Mo.
Founded: 1871
Enrollment: 11,000
Nickname: Jennies
Colors: Cardinal and black
President: Dr. Bobby Patton
Director of Athletics: Jerry Hughes
Softball SID: Adam Horn
E-mail: horn@cmsu1.cmsu.edu
Phone: 660.543.4088
Fax: 660.543.8034

Press Box Phone: N/A
Head Coach: Rhesa Sumrell
Alma Mater: Middle Tennessee State- 1971
Record at CMSU: 449-247 (15th year)
Overall Record: 657-415 (27th year)
Phone: 660.543.4139
Assistant Coaches: Don Kennedy, Aron Potter
2001 Record: 36-22
MIAA Record/Finish: 11-7/3rd
Letter winners returning/lost: 12/5
Record vs Washburn: Series tied 20-20
Last year results: L 4-6, L 0-4, W 2-1

Emporia State University

Game Date: April 21 in Emporia
Location: Emporia, Kan.
Founded: 1863
Enrollment: 5,823
Nickname: Hornets
Colors: Old Gold and black
President: Dr. Kay Schallenkamp
Director of Athletics: Kent Wesier
SID: Don Weast
E-mail: weastdon@emporia.edu
Phone: 316.341.5454
Fax: 316.341.5589

Press Box Phone: 316.343.1815
Head Coach: Stacy Gemeinhardt
Alma Mater: Missouri, 2001
Record at ESU: First season
Overall Record: Same
Phone: 316.341.5499
Assistant Coach: Bonnie Jones
2001 Record: 20-24
MIAA Record/Finish: 6-12/7th
Letter winners returning/lost: 16/2
Record vs Washburn: ESU leads 41-35
Last year results: L 3-7, W 3-1, W 3-2

Series record vs all opponents

MIAA Opponents

Central Missouri State	20-20
Emporia State	35-41
Missouri Southern	13-22
Missouri Western	31-15
Missouri-Rolla	14-1
Northwest Missouri	27-14
Pittsburg State	31-36
Southwest Baptist	19-2
Truman State	20-13

Kansas Opponents

Avila College (Mo.)	1-0
Baker	15-2
Benedictine	19-10
Bethany	12-0
Cloud County	2-1
Fort Hays State	20-18
Friends	9-3
Haskell Nations	3-0
Johnson County	8-4
Newman	6-0
Kansas	2-17
Kansas State	4-14
Kansas Wesleyan	7-1
St. Mary's (Kan.)	3-1
St. Mary's of the Plains	8-2
Sterling College	3-0
Tabor	1-0
Wichita State	12-13

All Other Opponents

Abilene Christian (Texas)	0-1
Adams State (Colo.)	2-0
Adelphi (N.Y.)	1-0
Arkansas-Monticello	1-2
Augustana (S.D.)	2-6
Augsburg College (Minn.)	1-0
Bradley (Ill.)	1-0
Briar Cliff (Neb.)	1-0
Buena Vista (Neb.)	1-1
Cameron (Okla.)	2-0
Central (Iowa)	5-3
Central Arkansas	4-1
Central Methodist (Mo.)	0-0
Central Oklahoma	4-1
Central State (Ohio)	4-3
Centenary (La.)	1-0
Coe College (Iowa)	0-1
Colorado College	1-0
Colorado School of Mines	1-0
Colorado-Colorado Springs	2-0
Columbia College (Mo.)	1-0
Concordia (Minn.)	1-1

Concordia (Neb.)	1-0	Olivet Nazarene (Ill.)	0-2
Creighton (Neb.)	0-2	Pacific Lutheran (Wash.)	1-0
C.W. Post	0-0	Park (Mo.)	1-0
Dana College (Neb.)	4-0	Peru State (Neb.)	3-0
Delta State (Miss.)	1-0	Quincy (Ill.)	2-1
Doane College (Neb.)	2-0	Regis (Colo.)	1-0
Drake (Iowa)	1-0	Rollins College (Fla.)	1-0
East Stroudsburg (Pa.)	3-0	Saginaw Valley (Mich.)	1-1
Eastern New Mexico	3-0	Simpson College (Iowa)	2-0
Erksine (S.C.)	2-0	SIU-Edwardsville	1-0
Eureka College (Ill.)	1-0	South Connecticut State	0-1
Evangel (Mo.)	0-0	South Dakota	4-0
Florida Southern	1-0	South Dakota State	5-2
Florida Tech	0-1	Southampton	0-0
Georgia College	1-0	Southeastern Oklahoma	0-0
Grace College	1-0	Southern Arkansas	0-0
Grand View (Iowa)	1-0	Southern Colorado	4-1
Henderson State (Ark.)	1-0	Southern Nazarene (Okla.)	1-0
Houston Baptist (Texas)	1-0	Southern Utah	1-0
Howard-Payne (Texas)	0-0	Southwest State (Minn.)	3-0
Illinois-Chicago	2-0	St. Cloud State (Minn.)	3-2
Incarnate Word (Texas)	2-1	St. Edward's (Texas)	2-0
Indiana State	1-1	St. Francis (Ill.)	1-0
IUPUI-Indianapolis	0-1	St. Mary's (Ind.)	0-1
Lincoln (Mo.)	11-0	St. Mary's (Neb.)	0-1
Lambuth (Tenn.)	0-1	St. Mary's (Texas)	1-0
Limpcomb (Tenn.)	1-0	St. Thomas Aquinas (N.Y.)	1-0
Livingston (Ala.)	1-0	St. Xavier (Ill.)	2-2
Lutheran (Iowa)	2-0	Stephen F. Austin (Texas)	0-1
Mankato State (Minn.)	4-1	Tarkio (Mo.)	2-0
Marycrest (Iowa)	2-0	Tarleton State (Texas)	0-1
Marymount (N.Y.)	8-1	Texas Lutheran	2-0
Massachusetts-Lowell	0-0	Texas Woman's	0-0
Minnesota-Duluth	2-0	Valpraiso (Ind.)	1-0
Mississippi College	1-0	Vanguard (Calif.)	1-0
Missouri Baptist	1-0	Wartburg College (Iowa)	1-0
Missouri-Kansas City	7-3	Wayne State (Neb.)	8-7
Missouri-St. Louis	3-3	Wayne State (Mich.)	1-0
Morningside (Iowa)	0-2	West Florida	1-1
Mount St. Scholastic	1-0	Western New Mexico	1-1
Nebraska-Kearney	12-20	William Jewell (Mo.)	1-0
Nebraska-Omaha	3-10	William Penn (Iowa)	0-1
New Mexico Highlands	1-0	William Woods (Mo.)	0-1
New York Tech	1-0	Wisc.-Eau Claire	1-0
North Dakota	3-1	Wisc.-Oshkosh	2-0
North Dakota State	3-4	Wisc.-Superior	3-0
Northeastern State (Okla.)	4-6		
Northern Colorado	3-0		
Northern Iowa	0-3		
Northwest Iowa	1-0		
Notre Dame (Ind.)	1-0		
Oklahoma	2-3		
Oklahoma Baptist	2-0		
Oklahoma City	4-13		
Oklahoma Panhandle	1-0		

2002 Opponents in Bold